



The Council Quarterly

Quarterly Newsletter of the Florida Urban Forestry Council

2020 Issue One

The Council Quarterly newsletter is published quarterly by the Florida Urban Forestry Council and is intended as an educational benefit to our members. Information may be reprinted if credit is given to the author(s) and this newsletter. All pictures, articles, advertisements, and other data are in no way to be construed as an endorsement of the author, products, services, or techniques. Likewise, the statements and opinions expressed herein are those of the individual authors and do not represent the view of the Florida Urban Forestry Council or its Executive Committee. This newsletter is made possible by the generous support of the Florida Department of Agriculture and Consumer Services, Florida Forest Service, Nikki Fried Commissioner.

JEA - A TREE LINE USA®

Submitted by Joe Anderson – JEA Utility Forester & Certified Arborist



The Tree Line USA® program highlights the best practices in public and private utility arboriculture. It is one of a suite of programs promoted by the Arbor Day Foundation and the National Association of State Foresters to include, but not limited to, Tree City USA®, Tree Cities of the World™, Tree Campus USA®, and Tree Campus K-12®.

JEA joins nine other utilities in Florida when meeting the five core standards on a consistent basis through recent years (for a directory of Tree Line USA® utilities see <https://www.arborday.org/programs/treelineusa/directory.cfm>) The five core standards include:

- (1) Quality Tree Care,
- (2) Annual Worker Training,
- (3) Tree Planting and Public Education,
- (4) Tree-based Energy Conservation Program, and
- (5) Participation in an Arbor Day Celebration.

JEA is the primary utility provider for electric, water, and waste water services for the City of Jacksonville (COJ), FL. When first established in 1895, the Jacksonville

Electric Authority managed the electric system. JEA grew from an entity of city government to an independent authority in 1967. In 1997, the water and sewer systems (operated by the COJ since 1880) also became part of the utility’s service offering. No longer solely an electric utility, JEA adopted its abbreviated acronym as its legal name.

Utility services are no small task and aligns with the greatest engineering achievement of the 20th century. The National Academy of Engineers recognize that the greatest achievement was not the Internet, not the i-Phone, not a man on the moon, but universal access to utilities creating and enhancing a way of life.

Today, JEA is the largest non-profit, community-owned utility in Florida and one of the largest in the United States. JEA serves approximately 478,000 electric, 357,000 water, and 279,000 sewer customers. This requires a lot of wire, pipe, and right-of-way. JEA is a municipality-owned, community-minded utility. The utility infrastructure must provide a custom fit alongside a variety of goods and services provided by the city and private commercial businesses. Utilities must share the right-of-way with a complex system of roads, traffic, sidewalks, bridges, streetlights, telecommunication cables, drainage systems, recreational resources, waterways, and municipal landscapes--to include the roots and canopies of trees. Proper planning and responsive stewardship can mitigate the chance of conflict, error and chaos.

Nowhere is this more applicable than in the shared space between dependable overhead electrical service and a resilient and sustainable tree canopy.

JEA’s vegetative management team of utility foresters, certified arborist, engineers, and contract tree professionals provide the expertise to balance the needs of the utility with the needs of an expanding tree canopy. The Tree Line USA® program provides a blueprint of how overhead electrical power can co-exist with a canopy of trees. This is a huge task for any utility, and with long-lasting consequences. It just might be the greatest achievement and balancing act of the 21st century.

[The Tree Line USA® program provides a blueprint of how overhead electrical power can co-exist with a canopy of trees.]

The core standards are not exclusive to the Tree Line program. They are characteristic of industry standards, deeply embedded

continues on pg. 3

INSIDE:

JEA - A Tree Line USA®	1 & 3
President’s Message	2
ANSI Z133 Safety Standard: Electrical Safety.....	4 - 5
Stump the Forester	7
Tree of the Quarter.....	8
Avoiding Gridlock Before the Storm.....	10
2019 Friends of Our Urban Forest Awards Program.....	11 - 13
Members.....	14 - 15
Request for Articles	15

PRESIDENT'S MESSAGE



I am writing this message on the heels of a grand 2020 Urban Forestry Institute (UFI) conference in DeLand. What a great venue for the meeting of the minds and robust conversations about trees and urban forests. We are fortunate we had the opportunity to gather on the eve of pending travel restrictions and rollbacks of social gatherings in the wake of a worrisome coronavirus.

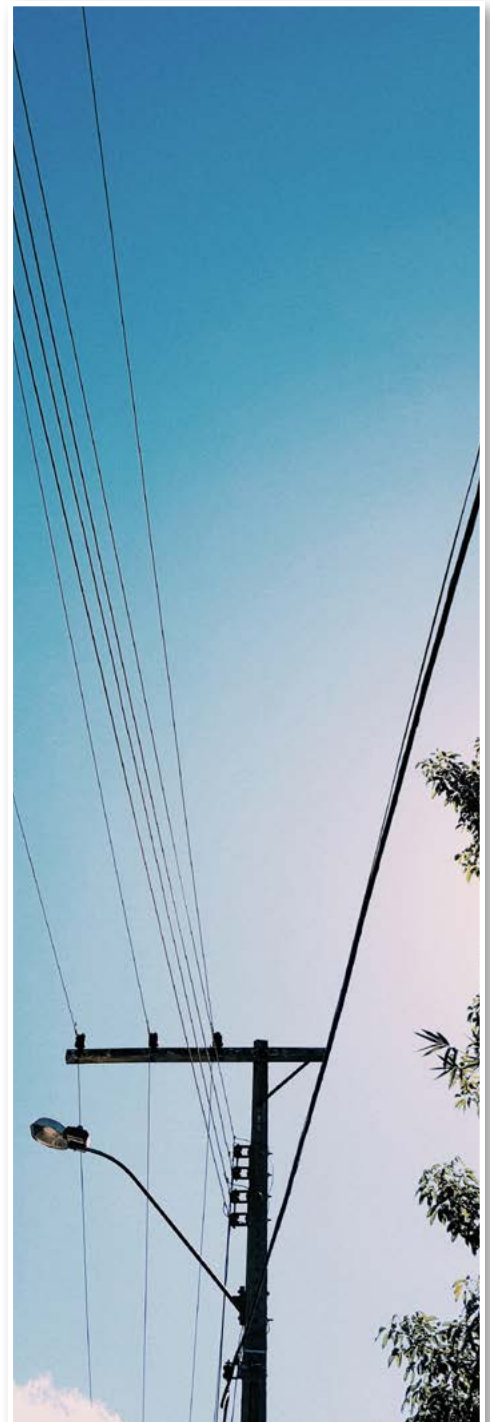
Drastic attempts to inhibit the spread of the disease included the cancellation of Florida's classic Professional Golf Association (PGA) tournament just days after our conference. We have yet to see how the pandemic story unfolds.

*As stewards of trees and forests, we can never forget the seriousness, the pandemic potential, and the devastating impact tree diseases can bring to bear on our trees, forests, and landscapes. The disappearance of the American chestnut (*Castanea dentata*) by a blight was perhaps the greatest ecological disaster of all time. The decimation of the American elm (*Ulmus Americana*) by the Dutch elm disease is a dreadful story. The entire family of ash (*Fraxinus*) species is threatened by the rapid spread of the emerald ash borer. The list continues with the ambrosia beetle, the palm weevil, lethal bronzing, and a multitude of other pests, diseases, and invasive species. The consequences can be diverse and unimaginable. A knowledgeable and committed tree community is a formidable combatant to these threats. These pandemic tree stories are still unfolding. United our stories will likely end with "happily ever after." Together, we can keep the narrative of Florida's trees and forests from becoming "once upon a time" stories.*

The Florida Urban Forestry Council is committed to its mission to promote the value, enhancement and sound management of Florida's urban forests through leadership, education, collaboration, and guidance. We are committed because you are committed.

*This issue of The Council Quarterly will provide a closer look into energized solutions with the Tree Line USA® program, the ANSI Z133 electrical safety standards, the white fringetree (*Chionanthus virginicus*), and our 2019 Friends of Our Urban Forests award winners. I am grateful to be part of this organization. I am grateful for the passion, curiosity, imagination, and comradery we share in the pursuit of sustainable and resilient urban tree canopies throughout Florida. I am grateful for who you are and what you do.*

Joe Anderson
FUFC President



NEWSLETTER ADVERTISING ANNUAL RATES:

Business-card size advertisement: \$75

Quarter page advertisement: \$115

Half-page advertisement: \$225

Full page advertisement: \$450

...

To place an advertisement in *The Council Quarterly*, please contact Sandy Temple, FUFC Executive Director (407-872-1738).

in the culture of company values. The *Tree Line USA*® program enables JEA and other qualifying utilities to build, leverage, endorse, and channel vegetative management practices, policies and programs into set goals and measurable objectives.

Quality Tree Care: JEA's tree trimming practices formally adopt, and are consistent with, current American National Standards Institute (ANSI) A300 standards and industry best practices regarding vegetative management. Quality tree care improves reliable utility services. Borders that are properly maintained and pruned increase reliability and storm hardiness of the utility's infrastructure. The *Tree Line USA*® status enables a utility to clearly demonstrate, articulate and leverage tree care practices with other tree-related requirements. As an aside, COJ has a tree protection ordinance that requires quality tree care practices for all entities impacting municipal forest resources.

Annual Worker Training: The utility completes and documents annual, formal, quality, tree care training for employees, contractors, and supervisors who perform vegetative management activities. Annual training is part of any occupation, enterprise, or company with a developing work force. The *Tree Line USA*® program provides the incentive to incorporate tree care principles and practices into established training schedules and programs.

Tree Planting and Public Education: In order to accomplish this challenge, JEA formed a *GreenReleaf* partnership with Greenscape of Jacksonville--Jacksonville's premier non-profit tree advocacy group planting, protecting, and promoting trees. All of JEA's tree planting activities are channeled through the *GreenReleaf* program. Nearly 500 trees are planted each year through *GreenReleaf*. As an added value, the utility is able to manage its tree mitigation requirements through the *GreenReleaf* program.

In order for a vegetative management plan to succeed, it's not enough to have the support of the public. Utilities need the support of an "informed" public. Public education is part of its business model. JEA's vegetative management team of foresters, arborists and engineers includes the knowledgeable staff that operate JEA's

TreeCare line--a telephone line dedicated to tree and utility issues. Tree-related questions and concerns can now be resolved at the first point of contact. The vegetative management team also participates in JEA's Ambassador Program--an outreach initiative designed to keep JEA customers comfortable, connected and familiar with their utility. All forestry and tree-related presentations and activities are tracked and documented toward meeting the Public Education requirement.

JEA's public education is not limited to the local community. JEA's Vegetative Management team joins the Florida Urban Forestry Council's (FUFC) coalition of utility, municipal, and professional foresters and arborists; landscape architects; nursery growers; park and recreation professionals; educators; and other tree advocates when promoting the value, enhancement and sound management of urban forests through leadership, education, collaboration, and guidance.

Tree-based Energy Conservation Program: JEA's utility foresters and arborist are in a great position to deliver a strong tree-based energy conservation message. It's important to keep energy and trees in the same conversation. Better placement of trees will offset the effects of heat islands, greenhouse

gases, and storm water. A sustainable and resilient tree canopy can complement a safe and reliable electrical service.

Arbor Day Celebration: Qualifying utilities are required to support or participate in annual Arbor Day events. Utilities are encouraged to collaborate with other urban forest advocates, municipalities, and community organizations when celebrating trees and promoting Arbor Day. Greenscape of Jacksonville will muster up COJ's tree community for a day of celebration during Jacksonville's annual Arbor Day Festival and Tree Give Away. JEA's Community Engagement team, Vegetative Management group, ambassadors and volunteers will have boots on the ground. During this celebrated event, JEA will join forces with Greenscape of Jacksonville, Arbor Day Foundation, Florida Urban Forestry Council, municipal foresters and arborists, UF/IFAS Cooperative Extension, Florida Forest Service, local tree-care industry, and other tree advocates for a tree-menduous day of celebration.

The *Tree Line USA*® is a badge of honor and integrity. It demonstrates a utility's commitment to providing safe and reliable service alongside a sustainable and resilient forest canopy. Both are something to be proud of; both are something to look up too.



ANSI Z133 SAFETY STANDARD: ELECTRICAL SAFETY

Safety should never be left out of a discussion about arboriculture. The American National Standard Institute (ANSI) Z133 safety requirements should never be left out of the discussion about safety. The ANSI Z133 standards exist because dangers, hazards, accidents, injuries, and fatalities exist.

Dr. Dennis P. Ryan and Brian Kane spoke about the Z133 standards in an article, "Z133.1 Safety Standard 2206: Personal Protective Equipment and Electrical Safety," published in the *ISA Arborist News* magazine, Volume 15, Number 3, June 2006, pp. 48-50. To date, the ANSI Z133

standards have been updated and revised. For example, recent changes in electrical hazards, section 4 recognizes three levels of qualification: the unqualified, the Incidental Line Clearance Arborist and Utility Line Clearance Arborist. We should not be surprised that the authors have contributed to updates and revisions.

Collaboration of knowledge and experience is not limited to current publications, and studies. The article puts safety and ANSI Z133 standards top of mind; remains a useful and worthwhile read; and recognizes individuals that have contributed to the advancement of safety standards, arboriculture, and urban forestry. The following excerpts address the electrical safety standard:

The purpose of the Z133.1 arboricultural safety standard is to provide safety criteria for arborist and other workers engaged in arboricultural operations. It was written under the procedures of the American National Standards Institute by the Accredited Standards Committee for Arboricultural Operations, Z133.1. The committee is composed of arborists from large and small companies, along with representatives from government agencies, the insurance industry, equipment manufacturers, ISA, TCIA, and other stakeholders. The objective of the committee is to provide the tree care

industry with guidelines that provide a safe work environment for arboricultural workers.

The safety standard is intended as a guide to federal, state, and local authorities in drafting their regulations and may be adopted in whole or in part.

"The safety standard is intended as a guide to federal, state, and local authorities in drafting their regulations and may be adopted in whole or in part."

This standard is intended to apply to all employees engaged in the business, trade, or performance of arboriculture who hire one or more persons to perform tasks such as pruning, repairing, maintaining, or removing trees; cutting brush; or performing pest or soil management.

The Z133.1 refers to two general categories of arborists:

- **Qualified arborist:** An individual who, by possession of a recognized degree, certification, or professional standing, or through related training and on-the-job experience, is familiar with the equipment and hazards involved in arboricultural operations and who has demonstrated ability in the performance of the special techniques involved.
- **Qualified line-clearance arborist:** An individual who, through related training and on-the-job experience, is familiar with the equipment and hazards in line clearance and has demonstrated the ability to perform the special techniques involved. This individual may or may not be currently employed by a line-clearance contractor.

Because of the many specialized procedures used during arboricultural operations, it must be emphasized that exceptions to provisions of the safety standard may be acceptable and that flexibility and/or decision as to the applicability of this standard to profession operations may be required.

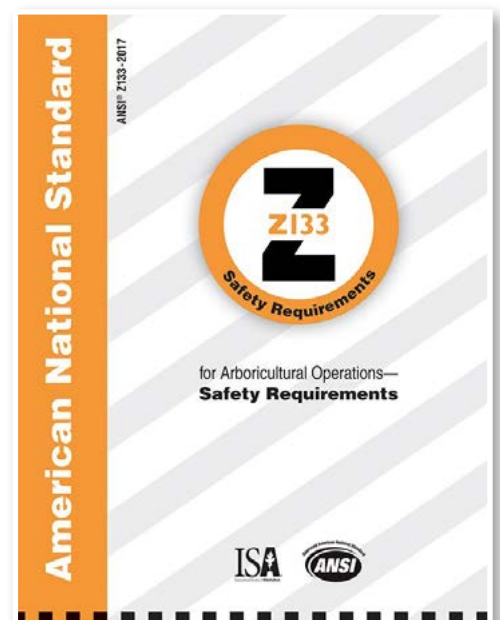
It is important that every tree worker understands the dangers of electricity. And

electrical hazard exists whenever a worker, tool, tree limb, or any other conductive object is closer than 10 feet from an energized overhead electrical conductor, including communication wires and cables.

The Z133.1 standard states that *arborists and other workers shall be instructed that*

- *electrical shock will occur when a worker, by either direct contact or indirect contact with an energized electrical conductor, energized tree limb, tool, equipment, or other object, provides a path for the flow of electricity to a grounded object or to the ground itself. Simultaneous contact with two energized conductors phase to phase will also cause electric shock that may result in serious or fatal injury.*
- *electrical shock may occur as a result of ground fault when a person stands near a grounded object (for example, if an uninsulated aerial device comes into contact with a conductor when outriggers down).*
- *in the event of a downed energized electrical conductor or energize grounded object, there exists the hazard of step potential.*

According to the standard, *an inspection shall be made by a qualified arborist to determine whether an electrical hazard exists before climbing, otherwise entering, or performing work in or on a tree.* It is important to note that only the employer can



certify that an employee has been trained to recognize and is appropriately qualified to work within proximity to electrical hazards (that is, the employee is a qualified line-clearance arborist).

It also states that *qualified line-clearance arborists and line-clearance arborist trainees shall maintain minimum approach distance from energized electrical conductors.* The minimum approach distance for a qualified line-clearance arborist is determined by the voltage of the lines and is outlined in a table in the standard. For persons other than qualified line-clearance arborist/trainees, the minimum approach distance from energized lines is 10 feet and increases with voltage (set forth in a table). If that distance cannot be maintained during arboricultural operations, the standard states that *the electrical system owner/operator shall be advised and an electrical hazard abatement plan implemented before any work is performed in proximity to energized electrical conductors.*

The standard also includes requirements that apply to climbers working near energized lines.

- *The tie-in position should be above the work area and located in such a way that a slip would swing the arborist away from any energized electrical conductor or other identified hazard.*
- *While climbing, the arborist should climb on the side of the tree that is away from energized electrical conductors while maintaining the required distances from the lines.*
- *Footwear, including lineman's overshoes, having electrical-resistant soles, shall not be considered as providing any measure of safety from electrical hazards.*

The standard also states that *aerial devices with attached equipment (such as chippers) brought into contact with energized electrical conductors shall be considered energized. Contact by people and/or equipment shall be avoided by maintaining a distance of at least 10 feet between energized lines and the equipment.*

Many companies and climbers already follow the Z133.1 safety standard, but some do not. Your understanding of this standard is important. The consequences of not understanding and following the standard can be costly in more ways than one.

- Excerpts from Dennis P. Ryan and Brian Kane, "Z133.1 Safety Standard 2206: Personal Protective Equipment and Electrical Safety" published in the *ISA Arborist News* magazine, Volume 15, Number 3, June 2006, pp. 48-50. At the time of publication, Dennis Ryan was the professor of arboriculture and urban forestry, and Brian Kane was an assistant professor of commercial arboriculture, Department of Natural Resources Conservation, University of Massachusetts, Amherst.



WE ENVISION AN ENGAGED COMMUNITY
CREATING SUSTAINABLE GREEN SPACES AND A VIBRANT TREE CANOPY
TO EQUITABLY STRENGTHEN OUR ENVIRONMENT, ECONOMY, SOCIETY, AND HEALTH.

FUNDED BY



MEMBERS OF



communitygreening.org



Industry leading
equipment resources



Nationwide 24/7 crisis response

Unmatched safety record

Highest standards for crew professionalism

Nelson
TREE SERVICE, INC.

Contact your Nelson representative today to discuss your vegetation management needs:

Bob Turner Jr. at 1-856-694-4100

Wedgle® Direct-Inject™ TREE INJECTION SYSTEM

Our advanced technology for tree treatment allows you to

INCREASE THE NUMBER OF TREES YOU TREAT IN A DAY!

- ◆ No drilling damage
- ◆ No mixing at job sites
- ◆ No guarding or return trips
- ◆ No waiting for uptake
- ◆ Treats most trees in five minutes or less!
- ◆ Successful and most profitable add-on service




Made in
the USA

Multiple injection tips designed for all types of trees, conifers and palms



Insecticides • Fungicides • PGRs • Antibiotics • MicroNutrients

AVAILABLE AT:

WINFIELD™

855-880-0048

www.winfieldpro.com

ArborSystems

Tree Injection Solutions
ArborSystems.com

STUMP THE FORESTER

QUESTION: When trimming trees for electrical lines, where does the responsibility for the utility begin and end?

ANSWER: In short, the responsibility for trimming trees, by the utility, often begins and ends with an electrical hazard--where there is a need for special skills and insulated equipment to safely work near energized lines.

I wish the answer was simply that simple. Trees, utilities, customer expectations, and conflicts are rarely straightforward and easy. To complicate matters, in the urban and suburban environment, trees are often co-owned as trees and tree parts cross multiple boundaries. Therefore, responsibility for tree care can be co-owned. Responsibility for a tree's care can fall on the utility, municipality, a property owner, and their neighbors. To set the right expectation, consider that the utility provider is in the business of providing safe and reliable utility service--power, water, and sewer for example. Electrical utilities are in the business of providing solutions for electrical hazards and conflicts. They support tree businesses, but are not in the tree business per se. Scope of work is often confined to trimming that will require special skills and insulated equipment to complete an objective safely. Utility trimming is largely confined to areas where trees, tree parts, and electrical lines share the same space.

Here's where the skills and expertise of the utility forester, arborist, or vegetative management specialist provides its greatest value. The utility tree-care specialist must maximize and balance the benefits of both the utility service and the urban tree canopy. The professional tree care specialist must balance safety, electrical reliability, tree health, aesthetics, and community concerns. Power line clearance is a highly specialized type of arboriculture, with built-in risks. Electric utility pruning sometimes requires trees to be pruned outside the scope of traditional landscape pruning guidelines. It requires a working knowledge of the branches, laterals, switches, transformers and the grounding of both a utility's electrical distribution system and a tree's chemical distribution system. *Directional pruning* can alleviate electrical hazards created by tree branches. This method can largely go unnoticed if the pruning is limited to the outer edge of a tree's crown. Natural target pruning techniques can "train" a tree to grow away from the hazards of overhead power.

Why don't utilities trim for all wires within the right-of-way? Not all wires on utility poles are created equal. Generally, the

higher the wire the higher the voltage. Therefore, the utility's responsibility will begin and end in-and-around the highest wires and lines. In some instances lower secondary lines can be temporarily de-energized so that a private tree contractor can safely complete the work. Telecommunication cables are often the lowest on the pole. They are insulated, low voltage cables that do not carry the same level of electrical hazard. Therefore, the electrical utility may limit its responsibility well above the telecommunication cables.

Your local tree care industry provides the certified arborists and professional tree care specialists that can inspect your tree, identify potential hazards, and develop a plan to reduce existing risks. Your utility provider can assist with the removal of electrical hazards or other utility conflicts. Minimizing tree risks will increase the value of your property and maximize the tree's contribution to a healthy urban tree canopy.

*Answer provided by Joe Anderson, JEA
Utility Forester*



If you would like to 'stump the forester,' see page 15 for information on submitting your question!

Tree of the Quarter

WHITE FRINGETREE
(*Chionanthus virginicus* L.)

Submitted by David Fox, PhD, Lecturer
– University of Florida, School of Forest
Resources and Conservation

The moist forests and forest fringes of north Florida sport delicate touches of white blooms during February as several small tree and shrub species come out of their short winter hibernation. Among them is the white fringetree, also known as Old Man's Beard or simply fringetree, the showy white to greenish-white flowers can be a traffic-stopper when found planted as an accent tree in someone's front yard or lining a country lane. While it spends most of its year as just another non-descript forest mid-story plant, spring is its season to shine in the spotlight.

Size and Form:

Found all along the Atlantic coast from New Jersey to Florida and west through the Midwest to Texas, this member of the olive family typically attains a height of 20 feet or less. It is relatively slow-growing

and produces a symmetrical oval crown when open grown. It is often found along rural roadways in swampy margins or mesic hammocks. Its small size allows placement under power lines and as an attractive and lightly fragrant addition to small urban yards or as a patio tree. It is often sold or found as a multi-stem specimen with reddish-brown lenticel-dotted bark, becoming, like that aging uncle, flaky and more interesting with age.

Leaves:

This deciduous species has medium green opposite ovate to oblong leaves 3 to 5" long with entire margins. Leaves are produced soon after flowering in spring and age to yellow briefly in autumn before falling.

Flowers and Fruit:

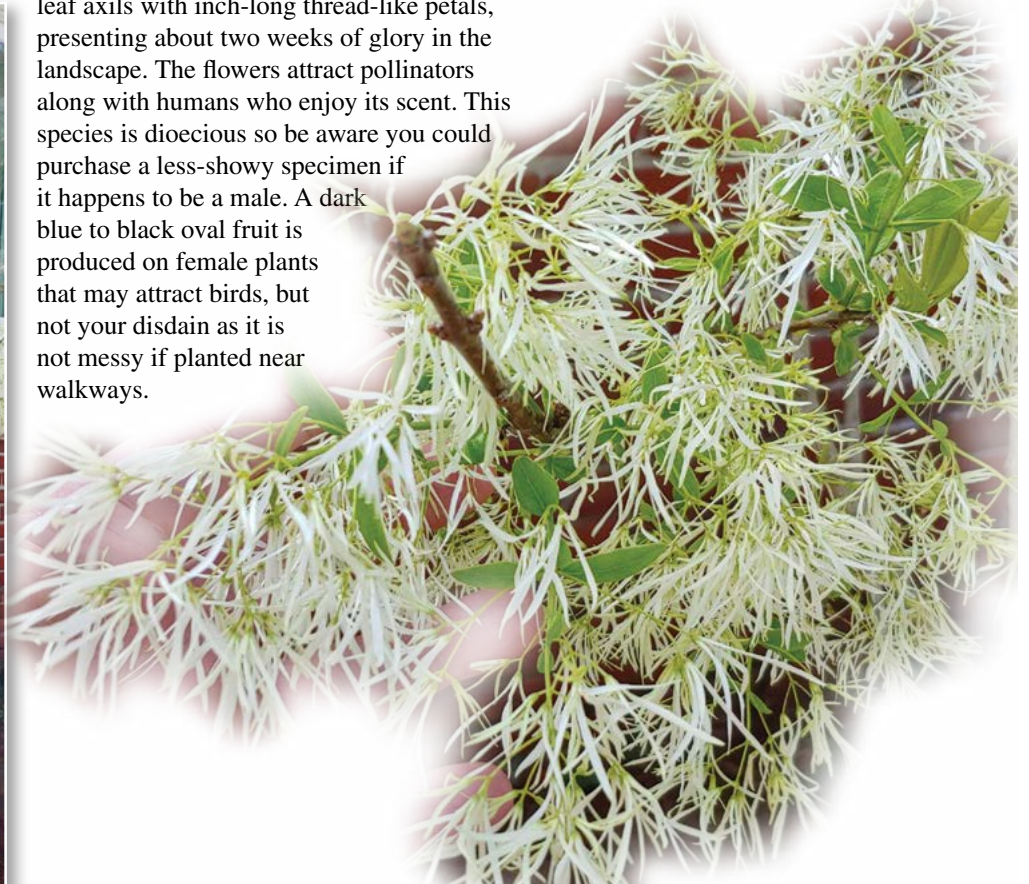
The fragrant four-lobbed flowers appear in leaf axils with inch-long thread-like petals, presenting about two weeks of glory in the landscape. The flowers attract pollinators along with humans who enjoy its scent. This species is dioecious so be aware you could purchase a less-showy specimen if it happens to be a male. A dark blue to black oval fruit is produced on female plants that may attract birds, but not your disdain as it is not messy if planted near walkways.

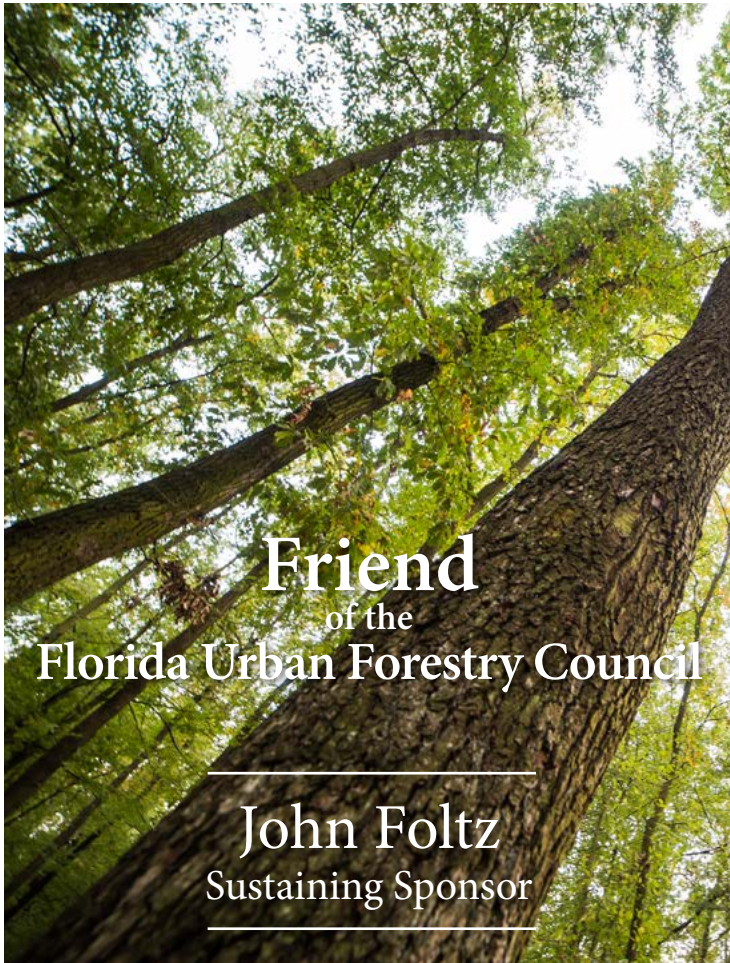
Environment:

Fringetrees prefer moist rich soil; so provide them a well-watered home in your landscape. Hardiness Zones 3 to 9 will provide the best climate regime as this is not a tropical species. *Chionanthus* is shade tolerant but it can flourish in all ranges of urban light conditions and many soil types as long as they are acidic. Scale insects are known to infest specimens on drier sites.

Uses:

Besides its obvious attractiveness when planted in the urban landscape, there are reports of various medicinal uses of the dried bark of *Chionanthus* by Native Americans, early settlers, and modern herbalists.





Friend
of the
Florida Urban Forestry Council

John Foltz
Sustaining Sponsor



OUR TEAM

JOHN HOLZAEFFEL, CA, ACE, CF
(352) 238-0917

ERIC HOYER, CA, RCA, CF
(863) 870-0734

CHARLIE MARCUS, CA
(850) 570-5983

JAY VOGEL, CA
(352) 238-0458

LEGACY ARBORIST SERVICES

A DIVISION OF NRPS FOCUSED ON MANAGING THE URBAN FOREST

Tree Risk Assessments

Street / Park Tree Inventory

Tree Appraisals

Canopy Analysis

Pre-Development Tree
Evaluations

Urban Forest Management
Planning

Expert Witness Testimony

i-Tree Analysis

On-site Tree Preservation

Grant & Ordinance Preparation

Arborjet Tree Injections

Educational Workshops

Natural Areas Management
Planning

Urban Forestry Outreach &
Promotion

CREATING A LEGACY, GROWING YOUR FUTURE SINCE 1974

www.NRPSforesters.com

PRUNING SAW SANITATION

BLADEBATH™

HORTICULTURAL PRUNING SAW
DISINFECTING TUBE

www.bladebath.com

SPECIAL INTRODUCTORY OFFER

\$28.95 + s/h



SIMPLE • EFFECTIVE • EFFICIENT

FOR USE WITH MOST STRAIGHT-BLADE HAND-PRUNING SAWS
PATENT PENDING • SAW NOT INCLUDED

AVOIDING GRIDLOCK BEFORE THE STORM – A STORM PREPAREDNESS TIP

Submitted by the USDA Forest Service in cooperation with the Florida Forest Service

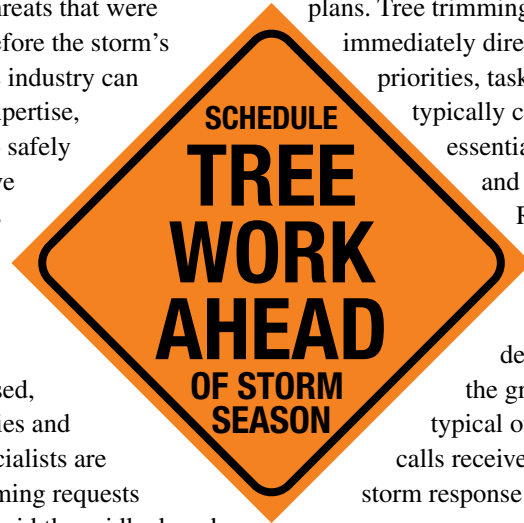


Healthy maintained trees can help weather the storm. Storm winds have no power over dead and declining branches, structural defects, and target threats that were properly removed before the storm's arrival. The tree care industry can provide the skills, expertise, and tools required to safely complete preventative maintenance of trees or limbs.

Once the storm is in the forecast, and soon after it has passed, utilities, municipalities and private tree care specialists are inundated with trimming requests and calls. You can avoid the gridlock and bottleneck associated with the high volume and demand for services by scheduling tree work well in advance of storm season.

Remember, once the storm is in the forecast, municipalities and utilities especially, activate storm preparation plans. Tree trimming resources are immediately directed to pre-planned priorities, tasks, and locations that typically center on protecting essential public facilities and emergency services. Response for individual pleas and isolated requests may be delayed and caught in the gridlock and bottleneck typical of a high volume of calls received by call centers and storm response centers.

So, don't delay, trim today.



Florida Urban Forestry Council is now on Instagram!
FOLLOW & SHARE OUR SOCIAL MEDIA PROFILES

/floridaurbanforestrycouncil
 /floridaurbanforestry
 /tufc_org

Help Us Grow!

Working in Harmony with Nature

Sumter Electric Cooperative has always placed a high priority on the environment by working to stay in harmony with nature. Evidence of SECO's environmental stewardship is displayed through the following programs.

Sumter Electric Cooperative:

- was named a **Tree Line USA** utility for the fourth consecutive year by **The National Arbor Day Foundation**. Employee arboriculture training, public education, and maintaining abundant, healthy trees in SECO's service area are common practices.
- installs osprey nesting dishes atop of the utility pole cross arms as needed for these magnificent birds.
- places squirrel guards atop the transformers to protect a variety of animals from danger, particularly squirrels.
- offers net metering to members interested in renewable generation such as photovoltaic systems.
- recycles retired power equipment, scrap steel, aluminum, copper, porcelain, fluorescent lights, ink printer and copier cartridges, plus much more.
- researches and writes **Nature's Reflections**, a special column in the members' newsletter developed to educate the community on the flora and fauna of Florida with eco-friendly topics like xeriscaping and conservation.

2019 FRIENDS OF OUR URBAN FOREST AWARDS PROGRAM

Throughout Florida, urban Forestry programs and initiatives are always underway. The Florida Urban Forestry Council's Friends of Our Urban Forest Awards recognize achievements, organizations, and individuals who are true advocates for community and urban forests. Are your people, places, and programs being recognized, announced, and celebrated? Do your community forests have outstanding people and programs that are putting down roots? Have you ever applied for, or submitted an award nomination to the Florida Urban Forestry Council? You can find more about the Friends of Our Urban Forest Award program at the FUFUC website, http://www.fufuc.org/awards_information.php.

Congratulations to our 2019 Friends of Our Urban Forest Award Winners!

RICHARD LEON
OUTSTANDING PROFESSIONAL



Richard Leon, Urban Forest Manager for the City of Jacksonville, demonstrates his pursuit to continually advance his skills, knowledge and contribution to the field of urban forestry. In a few short years, Richard has been able to break ground on new, exciting, and effective initiatives inspiring Jacksonville's tree-minded community with the confidence and courage to unite and build a better future through the stewardship of City trees.

His leadership and guidance have established new arborist positions within the City's rank and file, a City Tree Commission, sustainable tree planting programs, trees in the ground, urban tree studies and inventories, a new COJ.net/trees website, and a voice that speaks for the trees. Without question, Richard is a friend of our urban forests.

JEA recognizes that a sustainable and resilient tree canopy is part of building better community. To support its mission to provide safe and reliable utility service, JEA has in place an outstanding tree advocacy group with a Vegetative Management team of Foresters and Certified Arborists. They guide engineers, linemen, contractors, tree care professionals, city planners, city administrators, tree advocacy groups and individual customers safely and responsibly through the stewardship of Jacksonville's urban tree canopy.

JEA stands out as one of Florida's few utilities that have continually met the five core standards of a Tree Line USA® (since 2012). The Vegetative Management group is responsible for planting approximately 500 trees per year through the *GreenReleaf* partnership with Greenscape of Jacksonville. They serve on the forefront, and behind the scenes, as industry experts, advisors, and partners in tree-based programs, celebrations, conferences, printed material, and organizations – including the Florida Urban Forestry Council.

JEA VEGETATIVE MANAGEMENT TEAM
OUTSTANDING TREE ADVOCACY GROUP



KIDS IN THE WOODS – UNIVERSITY OF FLORIDA IFAS, SFRC AND US FOREST SERVICE, SRS/R8 OUTSTANDING PROJECT



The Kids in the Woods program is a collaboration between the University of Florida’s School of Forest Resources and Conservation, the USDA Forest Service, the Alachua County School District, the City of Gainesville’s Parks, Recreation and Cultural Affairs, and the Alachua County Environmental Protection Department. The program is co-led by Dr. Michael Andreu University of Florida School of Forest Resources and Conservation and Annie Hermansen-Baez of the USDA Forest Service Southern Research Station and supported by Molly Disabb, UF Extension Program Coordinator.

The Kids in the Woods Program in Gainesville takes students in public schools outside to conduct scientific studies on their school campuses and in nearby nature areas.

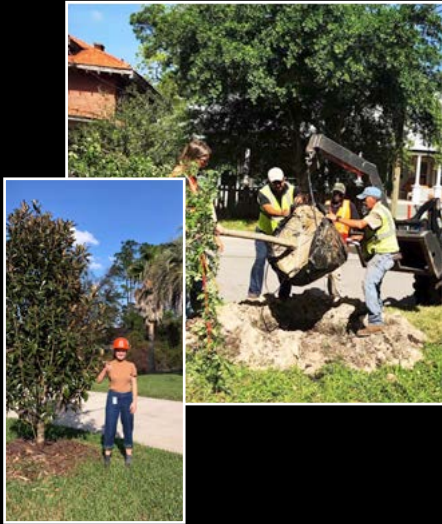
This program at Westwood Middle School is now in its seventh year of connecting 6th grade students with local urban forest ecosystems. Students gain first-hand experience with the scientific method by conducting outdoor studies about bird feeding behavior, creek erosion and deposition, and tree identification and tree benefits (eco-system services). Every spring we have a campout in the school soccer field for sixty students who are selected through a lottery. For many participants this may be their first experience sleeping outdoors. Evening activities include several team building exercises, a campfire – story telling, singing, the local Astronomy Club brings out telescopes for astronomical viewing, and a night hike into the nearby forest where all the three study modules occur.

In 2005, Hurricane Wilma completely destroyed the 117-acre Boy Scout Camp in Davie. It was previously completely forested in Australian Pines and every single one of them came down destroying all the buildings. The entire camp was demolished and rebuilt to current national Boy Scouts of America standards. The camp took seven years to rebuild due to lack of funds. Upon reopening in 2012, it looked like a city park instead of a Boy Scout camp. The Dirt Patrol has started a nursery in the camp and are growing an assortment of trees and plants. The group has decided to grow and plant 9,000 South Florida Slash Pines and turn the camp back into a forest. The Dirt Patrol is also installing a 25’ x 25’ Butterfly Garden in the nursery area and is eradicating Australian Pines and Brazilian Pepper which is re-growing throughout the camp. Only native trees and plants will be planted.

CAMP ELMORE (DAVIE) – DIRT PATROL OUTSTANDING PROJECT



630-CITY TREE PLANTING PROJECT
OUTSTANDING PROJECT



The City of Jacksonville is blessed to have a tree mitigation fund of nearly \$26 million. However, these funds come from deforestation so perhaps this could be considered a blessing and a curse. Because the mitigation funds are to mitigate (off-set) the additional environmental stresses from deforestation including air pollution, erosion, Stormwater runoff and much more, it's important to utilize these funds as appropriately and wisely as possible. This is why the 630-CITY Tree Planting Program was started where residents of Duval County can call 630-CITY and request a tree be planted in the right-of-way in front of their homes.

The residents are essentially acting as the City's eyes in the field identifying plantable locations in City rights-of-way. The trees are at no-cost to the residents; all that is asked of the resident is that they water them. Once a request is made, the resident is visited by someone from the City's forestry team who determines an appropriate species for the location. The forestry team found that 3" B&B trees are the best choice for this program. Because the residents are asked to assume stewardship of these trees, the burden of warranty is shifted away from the contractor and onto the resident, allowing the City to plant at a lower cost. The 630-CITY Tree Planting Program has been a huge success and is beloved by both City Council and the residents of Duval County. As of early February 2020, the urban forestry program has been awarded \$3.8 million for this program and has planted 1,346 3" B&B trees with thousands of requests waiting to be fulfilled.

The Urban Forestry unit of Pinellas County Urban Forestry and Landscape Services is made up of an outstanding team of professional foresters and arborists responsible for managing and maintaining trees located in the public areas of unincorporated Pinellas County, along County numbered roads through incorporated municipalities, and in County maintained parks and preserves. In addition to maintaining trees in the public spaces along more than 1100 miles of roadways and 1000 miles of sidewalks, the Urban Forestry staff creates and delivers outreach programs on Right Tree Right Place, tree inventory data collection, and tree maintenance programs that serve the over 900,000 residents of Pinellas County.

Pinellas County Urban Forestry program staff proactively develop and maintain exceptional partnerships across departments within Pinellas County, incorporated municipalities, and with community organizations to promote tree preservation and planting in Pinellas County. Pinellas County is proud to be the largest Tree City USA local government entity in the State of Florida and one of only 23 communities in the USA to be recognized as Tree Cities of the World by the Food and Agriculture Organization of the United Nations and the Arbor Day Foundation. It is through the hard work and technical skills of the Urban Forestry team of Pinellas County Urban Forestry and Landscape Services that this recognition is possible.

PINELLAS COUNTY URBAN FORESTRY AND LANDSCAPE SERVICES
OUTSTANDING URBAN FORESTRY PROGRAM



The City of Miami Beach recognizes the importance of preserving its natural resources. In 2015, the City adopted its first tree preservation and protection ordinance, which was a crucial step in protecting its urban forest. This set the frame work that would shape future land development throughout the City and created the City's Urban Forestry Division which plays a key role in providing regulatory oversight of the ordinance and administers the City's tree permit process.

preservation and protection ordinance which will pave the way for a more sustainable urban forest for the City of Miami Beach.

In 2019, the City's Urban Forestry Division worked on developing revisions to the ordinance by looking at the analytical work it had conducted over the past three years. This included a detail study of the current status of their urban forest and looking at the challenges or threats to their tree canopy and how they could structure the ordinance to abate these. In October of 2019 the City unanimously adopted the revised tree

CITY OF MIAMI BEACH TREE PRESERVATION AND PROTECTION ORDINANCE
OUTSTANDING TREE ORDINANCE



Join Us

Our members are the lifelines of our mission.
Thank you for your continued support.

New and renewed members through March 31, 2020. Please let us know if we fail to mention your name.

SUPPORTING

A FRIEND OF THE FLORIDA URBAN FORESTRY COUNCIL

*Jeff Foltz
John Foltz
Lilian Sattler
Andrew Wiltz
Jennifer Wiltz*

COMMUNITY GREENING

*Indira Broch
Mark Cassini
Nate Faris
Stephen Seto
Matt Shipley*

E SCIENCES, INC.

*Lori Ballard
David Mahnken
Matt Martin
Ben Mowbray
Tom Roberts*

EARTH ADVISORS, INC.

Darlene Harris

FLORIDA POWER AND LIGHT

*Colin Gordon
Gregory Polidora
Rick Vasquez*

NRPS LEGACY ARBORIST SERVICES

*Ben Holzaepfel
Eric Hoyer
Kari Hurst
Charlie Marcus
Jay Vogel*

ORLANDO UTILITIES COMMISSION

*Erin Givens
Richard Taylor*

SECO ENERGY

*Justin Hancock
April Hurst
John LaSela
Tracy Powell
David Watford*

SHERLOCK TREE COMPANY

Jonathan Wolfson

URBAN FORESTRY ORGANIZATION

Daniel Adams

VISUALSCAPE, INC.

Ivan Vila

GOVERNMENT / NON-PROFIT

CITY OF DELAND

*Mariellen Calabro
Kit Dennis
Chris Jackson
Gregory Kovan
Jay Sparks*

CITY OF MIAMI BEACH

*Omar Leon
Harper Martinez
Yanira Pineda
Manuel Sanchez
Flavia Tonioli*

CITY OF ORLANDO

*Jody Buyas
Katherine Hall
Alexandra Holiday
Condredge "Greg" Mallory
Michael Tatum*

CITY OF TALLAHASSEE

*Daniel Fendley
Sam Geiger
Norman Norton
Cris Revell
Mary Ann Teasley*

FLORIDA PROJECT LEARNING TREE

*Elise Cassie
Jessica Ireland
Lori Nicholson
Robert Raze
Robin Will*

T.R.E.E. INC.

*Richard Bailey
Hernan Maldonado
William Moriaty
Bob Scheible*

PROFESSIONAL

*Ginger Adair
Lauren Adams
Claudia Alzate
Gloria Antia
Neal Avery
Marguerite Beckford
Gerald Behan
Tara Boujoulian
Kathleen Brennan
Anthony Burrell
Beverly Cline
John Coniglio
Thomas Conrad
Tim Davis
Debra DeMarco
Karen DeMaria
Patricia DePlasco
Mark Dreibelbis
Steve Edgar
Mary Edwards
Newcome Edwards
Angela Essing
Ronald Faberman
David Flinchum
Terry Glynn
Raphael Gonzalez
Etienne Hernandez-
Perez
Matthew Hill*

*Jennifer Hitchcock
Dave Holley
Harold Hoyte
Kevin Hurst
Oona Johnsen
John Joyner
Chris Kincaid
Lawrence Koss
Gayle Lafferty
Mihaela Lafleur
Alexandre Lapierre
Shane Largent
Amanda Lindsay
Jennifer Llorente
Robert Mainguy
Nick Makris
Aura Mancia
Greg Marshall*

*Brent McCallister
Joseph McDonald
Joshua McFadden
Mark Miller
William Mohler III
Timothy Nigro
Erik Nobs
Josh Nye
Gwen Perney
Steven Poulson
Greg Reynolds
Carolyn Cheatham
Rhodes
Michael Rittenhouse
Jans Robert
John Roberts
Joe Rodriguez
Matti Rukholm
Camille Schillizzi
Lou Shepherd
Patrick Shutters
Brian Voelker
Ronald von Paulus
Jim Ward
Brian Watkins, Ph.D.
Anoch Whitfield
David Wise
Gregory Witherspoon*

*Ian Wogan
Conrad Wysocki
Jim Yelverton*

TREE ADVOCATE

*Susan Carter
Daisy Morales
John Springer
Shawna Velasco*

STUDENT

*Erin Downey
Nicole Steen
Derric Tay*

HONORARY MEMBERS

*Mike Conner
Anna Dooley
Norm Easey
Justin Freedman
Ed Gilman
Steve Graham
Michael Greenstein
Elizabeth Harkey
John Harris
Mary Lou Hildreth
John Holzaepfel
Julie Iooss
Howard Jeffries
Andy Kittsley
Ken Lacasse
Earline Luhrman
Bill Reese
Jerry Renick
Mike Robinson
Linda Seufert
John Tamsberg
Celeste White*

FUFC PAST PRESIDENTS

- Steve Graham..... (1990-1991)
- Ed Gilman..... (1991-1992)
- Bill Reese..... (1992-1993)
- Andy Kittsley..... (1993-1994)
- Jeffrey Siegel..... (1994-1995)
- Norm Easey..... (1995-1996)
- John Tamsberg..... (1996-1998)
- Mike Conner..... (1998-1999)
- Julie Iooss..... (1999-2000)
- Anna Dooley..... (2000-2001)
- Howard Jeffries..... (2001-2002)
- Mike Greenstein..... (2002-2003)
- Mike Robinson..... (2004-2005)
- Celeste White..... (2006-2007)
- Earline Luhrman..... (2008-2009)
- John Holzaepfel..... (2010)
- Jerry Renick..... (2011)
- Mary Lou Hildreth..... (2012)
- Elizabeth Harkey..... (2013)
- Ken Lacasse..... (2014)
- Justin Freedman..... (2015)
- Linda Seufert..... (2016-2017)
- John Harris..... (2018-2019)

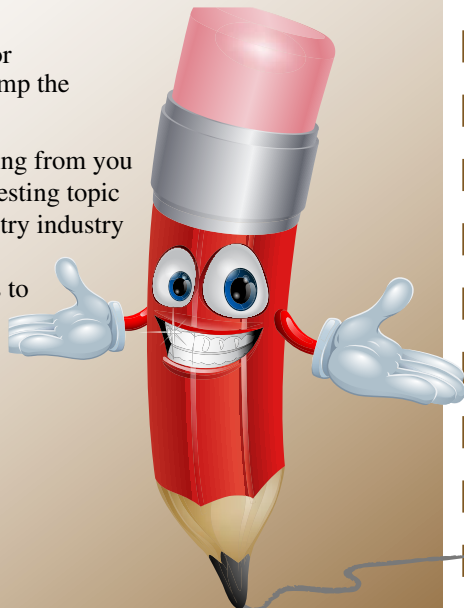
REQUEST FOR ARTICLES

Please let us know what urban forestry projects you have going on in your neck of the woods. The Florida Urban Forestry Council would greatly appreciate the opportunity to share your information in our newsletter. These articles can include:

- New trends in the industry
- News about tree advocacy groups
- Volunteer projects
- City tree programs
- Letters to the Editor
- Questions for “Stump the Forester”

We look forward to hearing from you on this or any other interesting topic related to the urban forestry industry and profession. Please send any articles or ideas to Joe Anderson, FUFC newsletter editor, at andejs@jea.com.

Thanks for contributing!



MEMBERSHIP APPLICATION

(Dues are effective for the calendar year of January 1 - December 31)

Make check or money order payable to FUFC and mail to:

Post Office Box 547993, Orlando, FL 32854-7993

Categories (please check one):

- Professional @ \$25.00**
(Professional membership is open to anyone who is actively working in the profession of Urban Forestry or any related profession.)
- Tree Advocate @ \$20.00**
(Tree Advocate membership is granted to those volunteers who are members of a tree board, beautification committee or other Urban Forestry volunteer group, and/or an interested citizen.)
- Supporting @ \$200.00**
(Supporting membership is granted to those individuals, groups or other entities expressing a desire for a strong supportive role in the Council. Membership will be granted for up to five individuals of an organization or business.)
- Government/Non-Profit Agency @ \$100.00**
(Government/Non-Profit Agency membership is granted to those individuals, groups or other entities actively working in the profession of Urban Forestry or any related profession. Membership will be granted for up to five individuals within the agency.)
- Student @ \$10.00**
(Student membership is granted to anyone who is actively enrolled as a full-time student and who is considering pursuing a career in Urban Forestry.)

Name: _____

Title: _____

Firm: _____

Address: _____

City: _____

State: _____ Zip: _____

Telephone: (____) _____

FAX: (____) _____

E-mail: _____

Amount Enclosed: _____ Date: ____/____/____

Would you be interested in further information regarding serving on a Council subcommittee? Yes No

Area of interest: _____



FLORIDA URBAN FORESTRY COUNCIL
 Post Office Box 547993
 Orlando, FL 32854-7993



For more information or change of address, please contact the FUFUC:

Phone: (407) 872-1738
 Fax: (407) 872-6868
 E-Mail: info@fufc.org
 Website: www.fufc.org

CHANGE SERVICE REQUESTED

Address Update:

- Please change my address as noted on the right.
- I receive duplicates. Please delete my name at right.
- Please remove my name from your mailing list.

2020 FUFUC EXECUTIVE COMMITTEE MEMBERS

OFFICERS:



Joe Anderson
President
 Appointed Position
 Advisory Member
 JEA



Erin Givens
President Elect
 Appointed Position
 Advisory Member
 Orlando Utilities
 Commission



Carolyn Cheatham Rhodes
Vice President
 Elected Position
 Member-at-Large
 Pinellas County



Gayle Lafferty
Secretary
 Elected Position
 Member-at-Large
 City of Vero Beach

Vacancy - Treasurer



John Harris
Immediate Past President
 Appointed Position
 FNGLA
 Earth Advisors, Inc.

COMMITTEE MEMBERS:

Kathleen Brennan, Appointed Position
 Florida League of Cities
 • Tallahassee

Greg Brown, Appointed Position
 FRPA
 • Hillsborough County

Jody Buyas, Appointed Position
 Advisory Member
 • City of Orlando

Elise Cassie, Appointed Position
 Advisory Member
 • FL Project Learning Tree

Steve Edgar, Appointed Position
 Society of American Foresters
 • City of Port Orange

David Fox, Appointed Position
 Advisory Member
 • UF/SFRC

Elizabeth Harkey, Elected Position
 City Arborist
 • City of Sanford

Julie Iooss, Appointed Position
 FL Chapter ISA
 • Retired – City of Orlando

William “Bill” Lester, Appointed Position
 Cooperative Extension Service
 • Hernando County Extension Office

Mark Miller, Appointed Position
 Advisory Member
 • City of Apopka

Carol Mini, Appointed Position
 Advisory Member
 • City of Palm Coast

Daisy Morales, Appointed Position
 Advisory Member
 Orange County Soil and Water
 • Conservation District

Ricky Peterika, Elected Position
 Member-at-Large
 Dark Moss LLC

Gregory Polidora, Appointed Position
 Advisory Member
 • FP&L

Darryl Richard, Appointed Position
 FL Department of Transportation
 • FDOT - District One

John Springer, Elected Position
 Tree Advocacy
 • Enchanted Walkabouts

David Watford, Elected Position
 Utility Forester
 • SECO Energy

Mark Williams, Elected Position
 Member-at-Large
 • City of Fort Lauderdale

Ian Wogan, Elected Position
 Private Arborist
 True Tree Service

• **Vacancy - ASLA/FL Chapter**

• **Vacancy - Member-at-Large**

• **William Liner**
 Florida Forest Service Liaison

• **Stephen Lloyd**
 Florida Forest Service

• **Sandy Temple**
 FUFUC Executive Director