

Summer 2015 In This Issue:

Emerald Ash Borer	1
President's Message	2
Memo Board	4
News From International	7
Tree Fund Chair	10
Grant Has Local Ties	11
New Director	11
Loren Westenberger Work Day	12
John P. White Memorial Scholarship	14
Your View	16
Members Corner	17
Cost of Not Maintaining Trees	20
2015 TCC Recap	21
Grades & Standards	22
Consultants Corner	24
Where They Reside	26
Florida Chapter Board Updates	28
Florida Chapter Cert. Exam Schedule	29
Florida Chapter Education Schedule	29
New Florida Chapter Members	30
Arborist Certification Committee Report	31

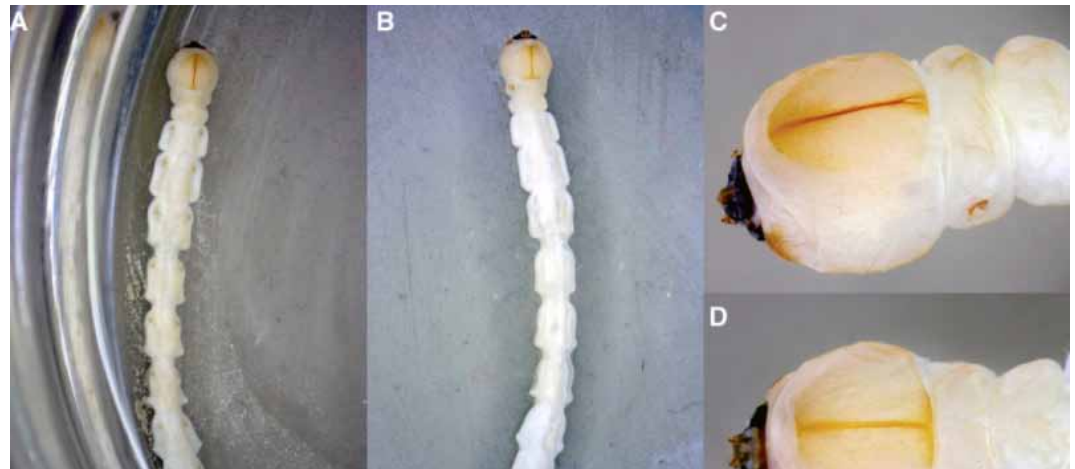


Remember!!!!
NO TREES FLORIDA CONFERENCE this year
- ATTEND to the ISA International Conference instead!
See page 17 for all the detail

Emerald ash borer confirmed as threat to white fringetree

Date: January 15, 2015

Source: Entomological Society of America



Emerald ash borer larva recovered from white fringetree. (A) Dorsal habitus. (B) Ventral habitus. (C) Dorsal view of head. (D) Ventral view of head.

Credit: Image courtesy of Entomological Society of America

A Summary:

The emerald ash borer, an invasive insect pest from Asia that has killed millions of ash trees in the United States and Canada, is also attacking the white fringetree according to a new study.

The emerald ash borer (*Agrilus planipennis*), also known as EAB, is an invasive insect pest from Asia that has killed millions of trees in the United States and Canada and has caused billions of dollars of damage since it was discovered in

2002. Fortunately, its damage has been limited to ash trees -- or so we thought.

During the summer and fall of 2014, Dr. Don Cipollini, a professor at Wright State University, found evidence that the EAB can also attack white fringetree (*Chionanthus virginicus*), a species native to the southeastern United States that is planted ornamentally. His observations are described in an article published in the *Journal of Economic Entomology* called

Ash Borer continued on page 5

A Message From the President



Your Board of Directors held a special planning session on February 20 at Nehrling Gardens in Gotha, FL. The purpose of the planning session was twofold – to get to know each other better so that we could work as a team and

to celebrate what we do well, to look at what we could don't do as well and brainstorm some ideas on how to improve. Board members as well as past presidents and committee chairpersons were invited to attend. We had about 23 participants in the day's session.

Our facilitator, Cindy Harris from ISA International, led us through the workshop. In the morning, we went through an interactive process called True Colors, which helped us to better understand ourselves and each other. We learned that we have a nice diversity of Orange (energetic, risk takers), Gold (responsible, organizers), Green (creative, visionaries) and only one Blue (harmonious, empathizers,) and we learned what each other's core motivation and behaviors are and ways to communicate and work well together.

In the afternoon, Cindy led us through a discussion of our successes (many) and where we could do things better. We prioritized our list of improvements and came up with three areas we wanted to focus on in the next year or two. Then we broke into small groups for a discussion of how we might accomplish these goals.

1. Increasing our presence on social media
2. Finding different ways to provide services for all of our members
3. Educating the next generation of arborists

In the upcoming months, the board of directors will be discussing the planning session results and committees will start the process of planning and implementing some of the initiatives. I am very grateful to all our members that took the time out of their busy schedules to participate in the planning session. Even though I believe that we have one of the best chapters in the ISA, there are always ways to make things better!

Celeste White

President, Florida Chapter ISA



Nehrling Gardens, Gotha, FL.



Florida Chapter ISA
2015 Board of Directors

Executive Committee

Celeste White, President ('15)
Orange County UF/IFAS Extension
6021 S. Conway Road
Orlando, FL 32812
Phone: 407-254-9210 Fax: 407-850-5125
cwhite@ufl.edu

Bonnie Marshall, President Elect ('15)
Speedling, Inc.
4447 Old Hwy 41
Ruskin, FL 33570
bmarshall@speedling.com

Dr. A.D. Ali, Past President ('15)
The Davey Tree Expert Co
12060 Coyle Road
Ft. Myers, FL 33905
Phone: 239-728-3938
ad.ali@davey.com

Lori Ballard, Treasurer ('14-'15)
Samnik & Ballard Expert Tree Consultants
12103 98th Ave.
Seminole, FL 33772
Phone: 727-786-8128
Fax: 727-789-1697
Cell: 727-403-5980

Directors

Julie Jooss, UFUC Representative ('13-'15)
City of Orlando Parks Division
1206 W Columbia St.
Orlando, FL 32805
407-246-3989
Julie.jooss@cityoforlando.net

Bill Armstrong, Commercial Arborist Representative ('15-'17)
Armstrong Tree Service
4426 Rabbit Pond Rd.
Tallahassee, FL 32309
850-443-2178
armstrongtree@comcast.net

Richard Cervi, Consulting Arborist Rep. ('13-15)
Cervi and Associates
1532 Connecticut Ave
St. Petersburg, FL 33703
Phone: 727-417-5873
cerviarborist@yahoo.com

Rick Joyce, Grower Representative ('15 - '17)
Forestry Resources Ecological
4353 Michigan Link
Ft. Myers, FL 33916
Phone: 239-851-9366
rjoyce@fri-eco.com

Ed Gilman, Educator Representative ('13-'15)
University of Florida
Dept. of Environmental Horticulture
2543 Fifield Hall
Gainesville, FL 32611-0670
Phone: 352-262-9165
egilman@ufl.edu

Dru Dennison, Municipal Arborist Representative ('14-'16)
401 Park Avenue South
Winter Park, FL 32789
Phone: 386-209-7429
ddennison@cityofwinterpark.org

Diana Gilman, Utility Arborist Representative ('14-'16)
Lee County Electric Cooperative
4980 Bayline Drive
N Ft. Myers, FL 33917
Phone: 239-656-2126
diana.gilman@lcec.net

Ryan Jones, Attorney Representative ('14-)
Traub Lieberman Straus & Shrewsbury
181 - 79th Street S.
Petersburg, FL 33707
crj.esq@gmail.com

Rob Calley, At Large ('15)
Backridge Tree Service Inc.
414 Wildwood Street
Mary Esther, FL 32569
850-240-2829
backridge17@gmail.com

Dr. Andrew Koeser, At Large ('15)
University of Florida
811 Gulf and Sea Blvd., Unit 101
Apollo Beach, FL 33572
phone: 813-633-4150
akoeser@ufl.edu

Administration

Norm Easey, Chief Executive Officer
Jan Easey, Admin. Assist.
Patty Morrison, Admin. Assist.

Florida Arborist newsletter is published quarterly by the Florida Chapter of The International Society of Arboriculture, Inc., 7853 South Leewynn Court, Sarasota, FL 34240, and is intended as an educational benefit to our members. Information may be reprinted if credit is given to the author(s) and this newsletter. Please submit all requests and articles to: Norm Easey, 7853 South Leewynn Court, Sarasota, FL 34240, Fax (941)342-0463 Email: FloridaISA@comcast.net. Articles submitted will not be returned and are preferred in electronic format via disk or e-mail. The Florida Chapter reserves the right to refuse or edit submitted articles or advertising as seen fit. All pictures, articles, advertisements and other data are in no way to be construed as an endorsement of the author, products, services, or techniques. Likewise, the statements and opinions expressed herein are those of the individual authors and do not represent the view of the FL-ISA, its executive director, board of directors, its chairman, this newsletter or its editor.

MEMO BOARD

Tour des Trees

May 31, 2015 - Tour des Trees registration closes (Tour is scheduled for October 25 - 31, 2015 from Orlando to Fort Lauderdale)

▷ Click here to register to ride!

▷ Click here to support Team Florida Riders!

2015 Coast Series Seminars

June 9, 2015 - Sun Coast - Tampa
▷ Register

June 12, 2015 - Gold Coast - Miami
▷ Register

▷ Coast Flyer

John P. White Fall Scholarship Applications DUE

June 15, 2015

▷ Click here for form

ISA INTERNATIONAL CONFERENCE August 8-12, 2015 - Orlando, FL

▷ July 17, 2015 - Gaylord Palms Resort deadline for special hotel rates

June 12, 2015 - ISA deadline for early conference registration rates

▷ July 17, 2015 - ISA deadline for late conference registration rates

Loren Westenberger Work Day
August 15, 2015
Recipient Application DUE
for February 2016 Work Day

▷ Click here for form



**PROTECTING THE REPUTATION
OF THE UTILITIES WE SERVE...
IT'S PART OF OUR JOB**

Nelson
TREE SERVICE, INC.

VEGETATION MANAGEMENT SPECIALIST

800-522-4311 • www.nelsontree.com/ad/reputation.html

▶ See the video



Ash Borer continued from page 1

“White Fringetree as a Novel Larval Host for Emerald Ash Borer” (DOI: 10.1093/jee/tou026).

While examining white fringetrees in Yellow Springs, Ohio, Dr. Cipollini found external symptoms of emerald ash borer attacks, including the presence of adult exit holes, canopy dieback, bark splitting, and other deformities. After removing the bark from one of the trees, he found evidence that at least three generations of emerald ash borer larvae had used the tree, and he saw several live larvae that were actively feeding. In addition, he found a dead adult that has been confirmed as emerald ash borer. Additional white fringetrees exhibiting evidence of emerald ash borer attack were also found in Springfield and Dayton, Ohio.


“It appears that emerald ash borer is eating more than ash trees,” Cipollini said. “It may have a wider host range than we ever thought in the first place, or it is adapting to utilize new hosts. This biological invasion is having drastic ecological and economic consequences, and you can’t always predict what’s going to happen.”

The borers attack trees by laying eggs on the bark. The serpentine feeding galleries of the larvae inside the bark disrupt the flow of nutrients and water and starve the

tree.

White fringetree, a relative of ash, is a deciduous shrub or small tree that can grow up to 30 feet tall. It has white flowers and a purple, olive-like fruit, and is growing in popularity as an ornamental. It is known for its relative lack of pest and disease problems, and until now has never been reported as a host to wood borers related to emerald ash borer. ❖

**JOHN P. WHITE
MEMORIAL SCHOLARSHIP**



Supporting education in
the arboriculture/urban
forestry industry.

Applications for the Fall 2015 semester are due by
June 15, 2015

Get More Info ▶

Sponsored by:
Florida Chapter International Society of Arboriculture
and Florida Urban Forestry Council



FEVA
Forestry Equipment of VA
www.feva.net
434.525.2929

YOU KNOW TREES

WE KNOW TREE TRUCKS

IT'S A GOOD PARTNERSHIP.

▶ LOW COST OF OWNERSHIP ▶ FINANCING AVAILABLE ▶ STOCK & CUSTOM UNITS
▶ DEPENDABLE TRUCKS FOR OVER 30 YEARS ▶ 45' TO 75' OF WORKING HEIGHT

Scan to learn more about the Terex XT Pro Lift



LESS WEAR & TEAR. MORE R&R.



The PALM-jet you know just got better.

PALM-jet Mg features lower rates and a new formulation that results in less wear & tear on equipment, saving you in labor costs and downtime. Trunk Injected PALM-jet Mg can be applied near water, unlike soil-applied magnesium treatments.

NEW
Formulation

Scan to
learn more



Contact JB Toorish for more information:
jbtoorish@arborjet.com or 781.983.2613.

ARBORJET
Revolutionary Plant Health Solutions

News From International

Additional Documentation Required for ISA Certification:



During Spring 2015, the ISA Certification Department will release revised applications for exam candidates. The revisions stem from ISA's continued work with the ISO/ANSI 17024 standard for personnel certification bodies on maintaining accreditation for the ISA Certified Arborist® program. In the past, the standard allowed self-attestation when determining applicants' exam eligibility. In 2014, ISO and ANSI revisited this procedure and determined that accredited bodies will now need to require objective evidence of applicants' eligibility prior to accepting their certification exam applications. ISA's revision to exam applications will now require the additional documentation listed below to be included with the application for consideration.

For educational experience:

- A transcript from the completed degree program

For employment experience:

- Letters of reference from employer(s), including the number of years of applicable experience

For self-employment experience:

- Letters of reference from customers (minimum one per year of applicable experience)
- Dated Invoices (minimum one per year of applicable experience)

For any experience to count toward a candidate's eligibility, ISA will need to receive accompanying documentation. If the candidate is deemed to be ineligible for the exam, all application materials will be returned to the candidate. This will be accompanied by all necessary refunds and a letter describing why the application was denied. ISA already requires this type of documentation in cases where a degree is on the periphery of being relevant to arboriculture or when an applicant is self-employed. While we understand that this change will add some burden to those who wish to take an ISA Certification exam, it is clear that this will ultimately strengthen the program by properly ensuring only eligible candidates are accepted. Candidates who are testing to recertify are exempt from this requirement, because their exam eligibility has already been verified. ❖

ISA ANSI Accreditation Update:



ISA was notified in early March that its ANSI accreditation had been officially approved. Shortly after this announcement, ISA received its official Certificate of Accreditation, which will be valid until June 11, 2019. This represents

a major milestone for ISA's Certification Department. In order to maintain the accreditation, ISA will participate in annual surveillance assessments, the first of which is currently underway. ❖

2015 ISA Annual International Conference and Trade Show:



August 8-12 in Orlando, Florida.

Reminder: There will be a CoR meeting on Sunday, August 9. Spanish Sessions Offered at ISA Conference in Orlando: ISA is introducing two Climbers' Corner presentations and a new afternoon educational track in Spanish on Monday, August 10, and also a full-day, Certified Arborist Exam Prep session in Spanish on Tuesday, April 11. Look for complete 2015 conference programming included with the April issue of Arborist News. **Hotel information for the Orlando conference is available on the ISA website.** Book your hotel now. Registration is also now available. Early registration ends June 12, 2015. ❖

ISA's Transition to Policy Governance:



Five years ago, the composition of the ISA Board of Directors began its final transition from the former 40-plus directors who represented their chapters, professional affiliates, and associate organizations to the elected, 15-person Board that we have today. With that transition came a change in the governance structure – how the Board of Directors actually directs ISA. The governance structure that was adopted is a system of Policy Governance based on the Carver Model Policy Governance focuses on the end point – where the organization needs to go or what it needs to achieve. Once the Board has established an end point, it assigns the organization's Executive Director (ED) the responsibility of accomplishing it. The ED is given the freedom to achieve the end point through the best means identified, but control is maintained by the Board through a set of limitations. These limitations are defined actions that are not permitted and are referred to as "limitations policies." Under this system, the ED is responsible for the operational activities of the society while the Board of Directors sets strategic direction (establishing end points) and monitors the activities of the ED through limitations policies that enable the Board to hold the ED accountable. With the Board of Directors function being the establishment and monitoring of end points, the committees that the serve ISA operationally now act as technical advisors to the ED, but not to the Board. It's a subtle change that in practice should not affect how things are done, and a set of limitations policies is in place to ensure it doesn't. Policy Governance is different from the previous hands-on style of governance. It does require a mind shift, but ultimately it allows both the ED and the Board the freedom, ability, and accountability to do their jobs and do what is best for ISA. ❖

Introducing New Tools to Combat Whitefly



The Q-Gun was designed by applicators to allow tree injection treatments to be performed quickly, safely, and accurately without the use of expensive and cumbersome plastic plugs. Combine the Q-Gun with Xytext 10% and you can eliminate whitefly in a hurry. Schedule a demo today!

Q-gun
Smarter Tree Injection

Xytext
Infusible Insecticide

Q-GUN KIT
item #5160
Price: **\$221.86**

XYTECT 10% INFUSIBLE
item #1120
A.I.: Imidacloprid 10%
Compares to: Ima-Jet and Imicide
Unit Size: 1 liter
Unit Price: **\$453.96**

1 liter treats 500-1,000" DBH!

Durable tip. No plugs!

Dose 1-20ml at a time

Works with hardwoods, conifers, and palms

Easy, ergonomic handle

Prime system with no exposure

Connects directly to the Q-Gun System!



LOCAL SUPPORT!
Kevin Graham
Territory Arborist - Florida
239-671-2705
kgraham@treecarescience.com

Contact Kevin for help with:

- Diagnosis
- Prescription
- Application training
- Pricing



877.272.6747

FOR MORE INFO AND UPCOMING EDUCATIONAL EVENTS:

www.TreeCareScience.com

©2014 RTSA. Patents pending.



To advertise in the Florida Arborist contact the Florida Chapter office at 941-342-0153.

Our electronic version of the Florida Arborist allows for an active link directly to your website!!

Single Issue advertising rates are as follows:

- Full Page - \$250/issue
- Half Page - \$200/issue
- Quarter Page - \$150/issue
- Business Card - \$75/issue
- Classified Ad - \$25/issue

Discounts for a commitment of 4 consecutive issues:

- Full Page - \$200/issue
- Half Page - \$150/issue
- Quarter Page - \$100/issue
- Business Card - \$50/issue
- Classified Ad - \$25/issue

Prices include one link from the ad to your website. Additional links are \$25/link per issue.

call 941-342-0153 or email floridaisa@comcast.net



Morriston, Florida

Quality, Variety & Service since 1984

2" to 12" caliper specimens with over 30 varieties for our Southeastern landscapes

Customer Service is our specialty, we provide quotes, pictures and deliveries on your schedule

Visit us at www.marshalltrees.com



Call for current availability 800.786.1422



2015 COAST SERIES SEMINARS



SUN COAST TAMPA area Tuesday, June 9, 2015

GOLD COAST MIAMI Friday, June 12, 2015



CEUs: ISA-6.5 BCMA - Mgmt-1.25, Prac-1, Sci-4.25 FNGLA-4 LIAF-4 FDACS-applied for



From Your TREE Fund Chair - Eric H. Hoyer



2015 Tour des Trees

Eric H. Hoyer, Florida ISA TREE Fund Liaison

As you have most likely heard by now, the 2015 Tour des Trees is scheduled this year in Florida during the last full week of October. This year's ride starts at Disney World in Orlando, works its way south and west through Riverview, Bradenton and Sarasota, Punta Gorda and Ft. Myers Beach, and then heads east and south to Everglades City to Miami and finishes in Fort Lauderdale. The purpose of this 500+ mile week-long bike ride is to raise money for the TREE Fund (Tree Research Education and Endowment Fund). The annual Tour des Trees (TDT) ride is the largest single annual fundraising event to support the TREE Fund.

Since its inception in 1992, the TDT rides have raised over \$7.2 million for the TREE Fund. The last four rides alone have generated over \$2.5 million. The monies raised go to various researchers, including Florida's own Dr. Ed Gilman, for important tree research including such topics as pruning, root and soil management, planting and establishment, plant health care, risk assessment, worker safety, tree biomechanics, urban forestry and a host of other topics. Florida has received numerous grants over the years and, as recently as 2013,

Dr. Andrew Koeser of the University of Florida received a \$10,000 grant to study various methodologies regarding tree risk assessments.

Last year, the Florida Chapter contributed over \$24,000 to the TREE Fund. Of this amount, over \$15,000 was raised by the four TDT riders in the 2014 ride. Because the ride is in Florida this year, the Florida Chapter has a great opportunity to raise a record amount for the TREE Fund. To date, five riders have registered for the 2015 TDT. They are Andy Kittsley (an annual rider since 1997), Steve Morton, Scott Davis, Bill Veach and myself. Each rider is obligated to raise a minimum of \$3,500 so the five of us must raise at least \$17,500. However, the Florida Chapter contributes \$1,000 to each rider, thus lessening each rider's obligation. Because the ride is in Florida this year, I see no reason we cannot have at least ten riders. That number would generate a minimum of \$35,000 to the TREE Fund!

You don't even have to be in the arboricultural profession to ride. The ride is open to anyone who has an interest in promoting trees and urban forestry/arboriculture. In fact, this year's ride includes a lawyer, a librarian, financial planners, a campground director, a physical therapist, an Interstate Battery franchisee, and even a hairstylist! There are riders from Canada and even two riders from Germany. It is truly an international event!

If you have considered participating in the TDT, this is your year! It will be the last week in October so the weather should be great. The ride is organized by a professional ride organizer who has planned the tour and selected the routes for many years. Safety is always his number one priority.

What a great way to spend a week of your time – riding through great Florida scenery and sharing the road with other like-minded individuals who love trees. Please consider joining the TDT this year – it won't get any closer to home again! Check out the TDT website at <http://stihltourdestrees.org> which includes a map of the route. ❖



Earth Advisors, Inc.

Main Office
4600 Sheridan Street, Suite 403
Hollywood, Florida 33021

Increasing the Values of Residential, Commercial, and Public Properties for over 20 years across Florida, North America, and the Caribbean.

Providing Regionally Correct:
Landscape Health and Condition Evaluations™,
Arboricultural (Tree) Evaluations,
Landscape and Tree Maintenance Plans,
Project Management, Contractor Work Audits,
Natural Areas Consulting,
Sustainable Landscape Designs,
Landscape and Tree Damage Assessments.

Contact us to increase "Green Values™" for your property:

eai@earthadvisors.com

Voice 954 987 1885 Fax 954 987 1898

**HYLAND R. JOHNS GRANT AWARD
RECIPIENTS HAVE LOCAL TIES!**

TREE FUND UPDATE

Congratulations for receiving the TREE Fund Hyland R. Johns Research Grant goes to Dr. Jason (Jake) Miesbauer (doctoral graduate of the University of Florida under Dr. Ed Gilman and now with the Morton Arboretum in Lisle, IL) and Dr. Andrew Koeser (University of Florida - Gulf Coast Research and Education Center in Wimauma, FL). Their project "Assessing Wound-induced Response Growth in Two Common Urban Tree Species" as it relates to tree risk assessment and climber safety has been awarded the \$25,000 grant. Congratulations. ❖

**DIVISION OF PLANT INDUSTRY:
NEW DIRECTOR**

Dr. Trevor Smith is the new Director of the Division of Plant Industry (DPI) at the Florida Department of Agriculture and Consumer Services. As DPI director, Smith will oversee the department's research programs and management of plant pests and disease. Smith was most recently the Bureau Chief of FDACS' Methods, Development and Biological Control, which wrestles with the detection, control and eradication of plant pests. He is a graduate of the University of Florida with a doctorate in entomology and nematology. Former DPI Director Richard Gaskalla retired this month after a distinguished 40-year career with the department. Dr. Greg Hodges is DPI's new Assistant Director. ❖



RPG Trees Are Superior Performers In Your Landscapes

- Hardening-off Trees
- Improving Quality
- Research & Education

*Now More Than Ever...
Look for the RPG Tag for Quality!*

2015-2016 Grower Members

- | | |
|--|--|
| <i>The Arbor Group</i>
Orlando/407-235-8492 | <i>Nature Coast Tree Corp</i>
Bell/386-935-9349 |
| <i>BE-MAC Farms</i>
Odessa/813-920-2247 | <i>SMR Farms</i>
Bradenton/941-708-3322 |
| <i>Fish Branch Tree Farm</i>
Zolfo Springs/863-735-2242 | <i>Snapper Creek Nursery</i>
Ft Pierce/772-216-9993 |
| <i>Marshall Tree Farm</i>
Morrison/800-786-1422 | <i>Spectrum Tree Farms</i>
Live Oak/800-753-1379 |
| <i>Stewart's Tree Service</i>
Brooksville/352-796-3426 | |

Associate Members

- | | |
|--|--|
| <i>Cherokee Manufacturing</i>
General Cordage
Graco Fertilizer Company | <i>Grass Roots Nurseries</i>
Treemart |
|--|--|

RPG Growers are committed to enhancing the image and quality of field-grown trees through the hardening-off process. Research continues to show that hardened-off field-grown trees are more wind resistant, use water more efficiently at planting, establish faster after planting, and when planted with container trees in a situation of limited water or irrigation will have dramatically higher survival rates.

To Subscribe to the RPG Times Newsletter or to request copies of the Tree Grading, Planting or Pruning Cue Cards contact an RPG member or visit www.rootsplusgrowers.org

Loren Westenberger Workday Chairperson Needed!

DO you have a desire to help non-profits with quality tree care? You can help the community by organizing the Loren Westenberger Workdays throughout the state. ISA members donate their time, talents and equipment to provide arboricultural services to needy non-profit-owned properties throughout Florida. Examples of eligible sites include churches, schools, arboreta, parks, garden clubs, etc. There can be up to three workdays per year, one each in North, Central and South Florida. These events are usually held in February.

Thanks to Jay Sockriter, who was our most recent chair, for organizing past workday events including Chinsegut Hill in Brooksville, Camp Ithiel (New Covenant Church) in Orlando and Nehrling Gardens in Orlando.



VOLUNTEER Work Days are organized by the Chair and the Work Day Committee. Tasks of the committee may include marketing the workdays to non-profits, reviewing the applications and visiting the sites, planning the arboriculture work to be completed and requesting volunteers and companies to perform the services. Workdays can be a great day of camaraderie and fun and you will be leaving your footprint on an organization that may not be able to afford proper tree care.

The Florida Chapter ISA Workdays are named after Loren Westenberger, past Florida Chapter ISA president and owner of Westenberger Tree Service in St. Petersburg. Loren was passionate about trees and frequently donated his time and talent to local churches, shelters and other such organizations who needed tree care.

If you are interested in volunteering to chair or be on the committee, or need more information, please contact Celeste White at ctwhite@ufl.edu or 407-254-9210 or the Florida Chapter ISA office at floridaisa.comcast.net.

ISA
FLORIDA CHAPTER

Loren Westenberger
Volunteer
Work Day



TreesAreCool specialty plate
...benefiting Florida's trees



OUR TEAM

ERIN GIVENS, CA
(352)457-6356

WALTER GIVENS
(352)457-1336

JOHN HOLZAEPFEL, CA, ACF, CF
(352)238-0917

ERIC HOYER, CA, RCA, CF
(863)670-0734

CHARLIE MARCUS, CA
(850)570-5963

ALSO PICTURED: JACK VOGEL, PRESIDENT

LEGACY ARBORIST SERVICES

A DIVISION OF NRPS FOCUSED ON MANAGING THE URBAN FOREST

Tree Risk Assessments

Tree Appraisals

Pre-Development Tree
Evaluations

Expert Witness Testimony

On-site Tree Preservation

Arborjet Tree Injections

Natural Areas Management
Planning

Street / Park Tree Inventory

Canopy Analysis

Urban Forest Management
Planning

i-Tree Analysis

Grant & Ordinance Preparation

Educational Workshops

Urban Forestry Outreach &
Promotion

CREATING A LEGACY, GROWING YOUR FUTURE SINCE 1974

www.NRPSforesters.com



**JOHN P. WHITE MEMORIAL SCHOLARSHIP FUND
APPLICATION FORM**



Students must return all of the following items listed below to the John P. White Memorial Scholarship Committee by the required deadline of **June 15th for the fall term** and **November 15th for the spring term**. Recipients will be notified of selection by July 31st for the fall term and January 1st for the spring term.

- Completed and signed scholarship application
- Two letters of recommendation (*reference Item #2 under Requirements Section*)
- Biographical Essay (*reference Item #3 under Requirements Section*)

****All applicants must use this application form. No other format will be accepted.****

STUDENT INFORMATION:

Name: _____
 Class status for the upcoming semester (junior, senior, etc.): _____
 College or educational institution you attend or plan on attending: _____
 Chosen major: _____ Expected date of graduation: _____

CONTACT INFORMATION:

Please indicate which of the following addresses you wish to be notified of award selections.

Campus/School Address:

Phone: _____ E-mail: _____

Home Address (if different than above):

Phone: _____ E-mail: _____

SCHOLASTIC ACHIEVEMENT (use extra page if necessary):

Please list only the most recent achievements, starting from the most recent.

Honor or Award	Basis for Selection
1.	
2.	
3.	

CONTINUED ON NEXT PAGE

Extracurricular Activities, Clubs, Volunteer Activities, Etc.	Positions Held and Time Frame/Year
1.	
2.	
3.	

Relevant Course or Work Experience	Time Frame/Year
1.	
2.	
3.	

I certify that all parts of the application and required attachments are correct and true. I understand that if any part of the provided information is found to be false at any time, it may result in disqualification from or revocation of award. I also understand that if I am awarded a scholarship as a result of this application, my name will be published and announced at the discretion of the John P. White Memorial Scholarship Committee which is composed of representatives from the Florida Chapter ISA and Florida Urban Forestry Council.

Signature _____

Date _____

Return completed application and attachments to:

John P. White Memorial Scholarship Committee
 c/o Florida Chapter ISA
 7853 South Leewynn Court
 Sarasota, FL 34240-9634

The John P. White Memorial Scholarship was established to support education in the arboriculture/urban forestry industry through scholarships in the sum of \$250.00 per semester for qualifying students.

Submission deadline is June 15th for the fall semester!

[Click here for more details](#)

YOUR VIEW. . .

Comments, Rebuttals, Praise, Complaints...

The Florida Chapter receives comments feedback from members and certified arborists regarding recent news, seminars, and articles. Read on for two recent submittals:

Trees and the Law Seminar

Many thanks Joe (Samnik) and Lori (Ballard) for your talks at the Trees and the Law conference yesterday. This was the first conference that I have been to where every subject presented was entertaining and relevant. While I work mainly with Mangroves and the exotics growing in wetlands I thoroughly enjoyed your talks and appreciate your time.

Best wishes,
Marc Ebling
Suncoast Environmental Group

"Palm Fertilization in the Landscape" submitted by Henry Mayer for the Spring 2015 Florida Arborist, based on Dr. Tim Broschat's publication "[Fertilization of Field-Grown and Landscape Palms in Florida](#)"

I respect Dr. Broschat, but he made two statements for which I would like to see data backing them up. Both statements are in the last paragraph on page 15 (of the Florida Arborist Spring 2015 issue).

The first statement is, "Roots of large palms typically extend out 50 feet or more from the trunk in all directions and will take up whatever fertilizers have been applied to the turfgrass." Does Dr. Broschat have data to support this? I conducted a year-long study that showed granular fertilizers that are surface applied to turf, do not benefit tree roots.

The second statement is, "When applying high N fertilizers like the 22-2-11 even 30 feet away from a palm on one side only have been known to kill palms from induced K deficiency." Does Dr. Broschat have data to support this, or was it a casual observation? Furthermore, he does not specify whether the Nitrogen source was quick release or slow release.

Submitted by,
Dr. A.D. Ali
Davey Institute

FLORIDA CHAPTER ISA MEMBERSHIP COMMITTEE

Bill Armstrong, Membership Chair

In June 2013 the Florida Chapter Board adopted strategic goals for the Florida Chapter. Several items address membership issues such as surveying members for their input on current topics, best communication methods, and post-seminar responses

At the more recent February 20, 2015 Chapter Planning Session, four initiatives evolved regarding Chapter membership. They included:

1. Expanding local workshops for dates and topics
2. Recapturing lost categories of membership such as production arborists and utility arborists
3. Developing a varying tuition and fee schedule for membership and workshops (this exists already, with member pricing at all Florida Chapter seminars)
4. Continuing to survey members at workshops and focus groups

Although the Membership Committee has not had a formal meeting, several members of the Board volunteered to serve on the committee, including Richard Cervi, Adam Jackson, and Dru Dennison. Other ISA members have also volunteered: Perry Odom (utility arborist and past Chapter President), Pamela Houmere, (certified arborist and President of Houmere Arboricultural Services, LLC a) and Tommy Locke (commercial arboriculture foreman). Board members met after the planning sessions and we have had several phone calls, and the at-large members have met with me on 3 occasions.

There was a general consensus that the Florida Chapter needs to do more to serve the needs of the current members of the Florida ISA as well as doing outreach to serve more members of the tree industry. It was generally agreed that our survey efforts have had limited success in providing useful planning and program development information.

To address these concerns and others, we see the need for a detailed strategic plan which would include mem-

MEMBER BENEFITS

Compare the benefits!

**Decide which membership suits you best:
International, Florida Chapter or BOTH!**

Benefits for joining International ISA:

- *Arborist News* publication
- *Arboriculture & Urban Forestry* publication
- Online access to *ISA Today* and other ISA newsletters
- Discount on annual ISA Conference
- Discounts on ISA merchandise
- Access to members-only online resources
- Use of the ISA Member logo
- ISA job bank
- ISA member directory listing
- *True Professionals* program
- Online *Find a Tree Care Service* tool

International Society of Arboriculture

MEMBERSHIP

Benefits for joining the Florida Chapter:

- Quarterly *Florida Arborist* newsletter
- Discounts on Florida Chapter seminars and online learning
- Discount on annual *Trees Florida Conference and Trade Show*
- Discounts on Florida Chapter merchandise
- Access to Florida Chapter lending library
- Florida Chapter awards program

JOIN BOTH!

- Receive all benefits listed above as well as receive deep discounts on certification and recertification fees



JOIN TODAY!

visit www.FloridaISA.org

bership goals with objectives to achieve those goals, and measurable strategies and their accompanying tasks for each objective. For example, the mission of the Membership Committee could include increasing and retaining memberships and improving services to members. Each mission should have a set of goals, which are fleshed out by the specific strategies then tasks to achieve the goals. Such a comprehensive plan may take several years to establish but initially we are proposing the following

Mission: Increase membership

1. Goal: recapturing lost members

Strategies toward this goal include identifying lost members and analyzing the reasons why some members or groups have left the Chapter, assessing the training needs of these groups with surveys, reviewing the relevance and availability of seminar or conference topics to these groups and then coordinating with the Education Committee for the possibility of developing new topics to present at seminars.

2. Goal: recruit more arborists who are hands-on employees in the industry (climbers, ground crews and support staff)

Strategies toward this goal include coordinating with the Education Committee to provide more seminars that will include this group, reviewing the fee structure for seminars and membership categories, expanding seminars offered in under-served areas of Florida, offering seminars on weekends as well as weekdays, and bringing the Florida TCC and climbing programs into closer ties with other Chapter functions.

We see this effort as a starting point. This is the barest of outlines and needs to be expanded and more developed. If anyone is interested in assisting with this process by providing input and contributing more ideas or feedback, please contact me.

Respectfully submitted,

Bill Armstrong, Membership Chair
 (850) 443-2178
armstrongtree@comcast.net

**Advanced technology for tree treatment...
 TREATS MOST TREES
 IN 5 MINUTES
 OR LESS!**

- ◆ No drilling damage
- ◆ No mixing at job sites
- ◆ No guarding or return trips
- ◆ No waiting for uptake

**Wedgle®
 Direct-Inject™
 TREE INJECTION SYSTEM**

Made in the USA

"Successful and most profitable add-on service"

Multiple injection tips designed for all types of trees, conifers and palms

**Insecticides • Fungicides • PGRs
 Antibiotics • MicroNutrients**

ArborSystems™
 Tree Injection Solutions
 ArborSystems.com

AVAILABLE AT: **WINFIELD™ Solutions**
 561.737.1200
 www.winfield.com



ISA Annual International Conference
and Trade Show

Orlando, Florida • August 8–12, 2015

Gaylord Palms® Resort and Convention Center
Everything In One Place, So You Can Have It All.

Make your reservations now!
www.isa-arbor.com/conference



Room Rate:
Single/Double — \$199 USD
(inclusive of resort fee)
Go online to book your room today.

Trade Show

Sunday, August 9

7:30 pm – 9:30 pm
(Welcome Reception on the Trade Show Floor)

Monday, August 10

9:30 am – 3:30 pm
(Climbers' Corner 9:55–3:20)

Tuesday, August 11

9:30 am – 3:30 pm
(Climbers' Corner 9:55–3:20)

Tree Academy Workshops

Saturday and Sunday,
August 8 and 9

Educational Sessions

Monday through
Wednesday,
August 10-12

Conference Registration

Full Conference Registration

Register on or before June 12, 2015

Member –	\$445 USD
Non-Member –	\$575 USD
Student Member –	\$95 USD

New in 2015

Spanish Educational Sessions—Check the website for details

Follow us



on International Society of Arboriculture and



@ISAarboriculture

The Cost of Not Maintaining Trees: A Symposium in Tampa, Florida

By Melissa H. Friedman and Andrew K. Koester

Photos courtesy of UF/IFAS CLCE



Florida Chapter teamed up to host a two-day symposium titled “The Cost of Not Maintaining Trees,” held at the University of South Florida’s Patel College of Global Sustainability (Tampa, Florida, U.S.). This symposium brought together the world’s leading experts on arboriculture, urban forestry, and utility vegetation management to discuss the economic, social, and ecological values of maintaining trees in the urban landscape.

Key experts invited to the event included:

- Dr. Jessica Vogt (“Findings from the Cost of Not Maintaining Trees Literature Review”)
- Dr. David Nowak (“How We Place Values on Tree Benefits”)
- Dr. Geoffrey Donovan (“Modeling Urban Forest Impacts”)
- Dr. Justin Morgenroth (“Impacts of Lawn Maintenance on Tree Condition”)
- Dr. Edward Gilman (“Impacts of Pruning and Root Improvement in the Nursery on Tree Health and Stability”)
- Dr. Richard Hauer (“The Costs and Benefits of Treatment vs. Removal of Trees Facing Noxious Yet Manageable Biotic Threats”)
- Dr. Cecil Konijnendijk van den Bosch (“Communicating the Benefits of Tree Care to Municipal Officials”)
- David Sivyer (“Quantifying the Long-term Ecosystem Service Impacts of Dutch Elm Disease in Milwaukee, WI, U.S., Using Historic Aerial Imagery”)
- Jeremy Barrick (“New York City Case Study”)
- John Goodfellow (“The Business Case for Preventative vs. Corrective Utility Vegetation Maintenance”)
- Mike Sherwood (“Saving Money and Trees Require Planning”)

Nearly 200 attendees, comprised of arborists, city manag-

ers, environmental consultants, natural resource professionals, and urban foresters, came together to learn more about the latest research regarding tree maintenance, urban forest inventory and management, and their impact on the benefits and services provided by trees and the urban forest.

A recurring message communicated among speakers was that the economic cost of proper tree management and maintenance can benefit tree health and longevity far beyond the monetary investments made to obtain them, with returns in the form of energy savings, air pollution removal, carbon storage and sequestration, and increased water quality and availability. Additional returns include better human health (e.g., reduced stress), commerce, and wildlife habitat. Sessions were recorded and will be made available by ISA in the near future.

Following the symposium, presenters were invited to participate in a one-day research summit to identify and prioritize research questions relating to the theme of the costs and benefits of trees and their care. A summary paper of these discussions will be published in ISA’s scientific journal, *Arboriculture & Urban Forestry* (<http://auf.isa-arbor.com>).

View the presentations online (<http://gardeningolutions.ifas.ufl.edu/clce/news/urban-tree-symposium.html>).



We would like to extend a special thanks to the event’s sponsors, especially:

• Arbicultural Research and Education Academy

- Bartlett Tree Experts
- Davey
- Florida Forest Service
- Florida Urban Forestry Council
- ISA and Florida Chapter ISA
- Patel College of Global Sustainability at USF
- UF-IFAS Center for Landscape Conservation & Ecology
- UF-IFAS Extension ❖

2015 International Tree Climbing Championship and Arbor Fair Re-Cap

The Florida Chapter ISA is proud to have recently been the host chapter of the first International Tree Climbing Championship ever held in Florida.

On March 21 and 22, 2015 Rowlett Park in Tampa was a-buzz with the climbing competition, educational workshops and the Arbor Fair. Male and female tree chapter climbing champions from all around the world descended, er... ascended, on Rowlett Park to show off their skills and compete for the title of World Champion of the ITCC Masters' Challenge. The Florida Chapter Board of Directors would like to thank competitor Mike Cross of ArborWorks, Tallahassee, FL for representing us in Tampa.

The format of the competition is the same format used at the Florida TCC. Competitors rotate among five preliminary events: aerial rescue, belayed speed climb, secured footlock, throwline and work climb. The five male and five female climbers with the highest point accumulation from the preliminary events then proceed to climb in the Masters' Challenge event.

The champions of the Masters' Challenge at the 2015 ITCC are James Earhart (male, Mid-Atlantic Chapter) and Jamilee Kempton (female, Western Chapter). Hats off to these talented winners!



Aside from the competition itself, ISA also offered an Arbor Fair with several outdoor arborist educational workshops in the park. The Arbor Fair was also hoppin' with climbers, families, and the general public who wandered between equipment vendors, The Tree Circus (an educational session for children), wildlife exhibits, information booths and the wildly popular kid's climb all while listening to Buffet-esque live music. The event was well-attended and thoroughly enjoyed by many.

A huge thank-you goes out to our Florida TCC Chair, Adam Jackson for his local input with the event prep and event logistics. Thanks to Florida Chapter President Celeste White who attended to represent our proud chapter. Many other volunteers (even some from out-of-state!) supplied the sweat equity and/or equipment for the prep and event... Thanks to all who helped!



Below are some of the companies/volunteers seen buzzing around Rowlett Park with **ITCC prep** work, and/or general assistance at the Arbor Fair:

- | | | |
|--------------------------|--------------------------|-----------------------|
| Arbor Shield | Happy's Tree Service | Speedling |
| Brickman Group | Independent Tree Service | The Tree Lady Company |
| Chris Coates / co-worker | JAWS Tree Service | and staff |
| EnviroTree Care | Marshall Tree Farm | Tree Tippers |
| Glenn Westphal | Murry's Tree Service | ValleyCrest |

Judging and logistics assistance during the ITCC event was provided by:

- | | |
|--------------------------------------|---------------------------------------|
| Adam Jackson - Local Chapter Liaison | Douglas LaFortune - Throwline Tech |
| Robert Hubbard - Logistics Support | Ken Miller - Belayed Speed Climb Tech |
| Sebastian Koerber - Work Climb Timer | Timothy Roop - Tech Assistance |
| Judge | |

The Arbor Fair 'Ask-an-Arborist' booth proved to be a popular stop for the general public. Volunteer experts from the following companies staffed the booth, including:

- | | |
|-----------------------|---------------------------------|
| Cervi & Associates | Marshall Tree Farm |
| City of Pompano Beach | UF-IFAS Orange County Extension |

NEW GRADES & STANDARDS DOWNLOADABLE PDF NOW AVAILABLE!

If you missed the recent Grades & Standards classes in any of the four locations, you missed a full day of new information. You can still access the newly revised Florida Grades and Standards for Plants document online to download and print. After countless hours of discussion and revisions, the dedicated committee has come up with the final version, which also includes the revisions for palms and shrubs.



Click here for the revised Florida Grades & Standards:
<http://www.freshfromflorida.com/Divisions-Offices/Plant-Industry/Plant-Industry-Publications>

Thanks to Tyson Emery, Bureau Chief with the Florida Department of Agriculture, who headed the committee in the project. Thanks to all committee members who spent countless hours fine-tuning the new Grades and Standards. Thank you to the nurseries who hosted the classes and provided materials and field samples for the program: SMR Farm in Bradenton, Cherry Lake Tree Farm in Groveland, Alger Farms in Homestead and Becker Tree Farm in Hobe Sound.

Preserve Florida's Greatest Green Resource - Trees!

Through your purchase of the TreesAreCool License Plate for your vehicle, you help benefit our Florida urban tree environments through:

- Tree research
- Scholarships
- Ongoing education of tree-care practitioners
- And provide public education programs about tree care and preservation.

The Tree Tag...Get it Today!

The Florida Chapter of the International Society of Arboriculture (ISA) is a non-profit organization committed to serving the needs of Florida's professional arborists and tree-care consumers.

Visit www.treesarecool.com to learn more.



Make sure you have all the *Right* tools.

As the only national trade organization dedicated to tree care businesses, becoming a member of TCIA is the best investment you can make.

BUSINESS TOOLS – From professional standards to the latest publications, members receive dynamic tools to run their businesses safely, efficiently, and successfully.

EVENTS – Enjoy members-only savings and deep discounts on TCIA-hosted workshops and events around the country.

SAFETY TOOLS – Worker safety goes hand in hand with professionalism and it's a primary focus of TCIA. We build programs, tools and resources to improve safety for our members and the industry.

NETWORKING – Join our community and participate in targeted discussions, events, and more with TCIA members from around the country.

MAJOR SAVINGS – Receive deep discounts on training and educational materials for you and your crew.

MARKETING TOOLS – Use our exclusive marketing materials to find, keep and impress customers. From videos to postcards, we've got what you need.

First-time members can start taking advantage of membership benefits right away, at the low introductory price of \$195. Limited time offer.



TREE CARE INDUSTRY ASSOCIATION
Advancing tree care businesses since 1938

Join today!

membership@tcia.org

tcia.org

1-800-733-2622

Photo: Brian Bixler. Arborist: J. David Driver (the X man).

“TCIA’s leadership and guidance have allowed us to do what we do best; spend more time in the field.”

Doug Edwards, Arborist Tree Care Enterprises, Inc.

Consultant's Corner

by Joe Samnik, Samnik Consulting Arborist



The passage of the 2013 Florida House Bill 7015 of the Evidence Code told Florida to get in line with *Daubert (v. Merrell Dow Pharmaceuticals, Inc.)* 509 U.S.579 (1993).

What is Daubert and how does the ruling affect our work in the field and our opinions? In the very broadest of terms Daubert states:

1. Whether the methodology or technique can (and has been) tested, the aim of which is to see if the theory can or has been falsified.
2. Whether the methodology or technique has been subjected to peer review and publication.
3. The known rate of error.
4. The degree to which the methodology has been accepted in the scientific community.

There's a Cook in the Kitchen

We love our gadgets. As arborists, individually and collectively, we love the newest gadgets used to measure and analyze trees and the like - especially if the arborist is a consultant. I've seen arborists with what have to be \$35,000 worth of gadgets in their 'bag of tricks'.

We've got gadgets to "x-ray" trees, gadgets to perform an "EGK" of trees and gadgets to replicate an "MRI" of a tree. These gadgets are all very impressive to be certain and very expensive. Of course there is the little nagging problem that many, if not most, folks don't have the experience to interpret the results provided by the gadgets. But hey, who's keeping score anyway -

The court emphasized that the inquiry be a flexible one and must focus "solely on the principles and methodology, not on the conclusions that they generate". There are many different kinds of experts, and many different kinds of expertise. It is the form of the expertise that will dictate what factors to use in assessing the reliability of the evidence.



certainly not the unsuspecting client or your colleagues.

What if that pesky colleague called the judge; do they keep score so to speak? When we appraisers use these gadgets does the court care if our gadgets are admissible? What of our opinions? Who, if anyone, is "gate keeping" these issues?

Well, there is somebody looking at these gadgets and the methodology used to render our opinions in appraisals, injury or death matters.

As it relates to the formulas used to measure failure rates or appraised values of trees or plants, I often encounter across from me the proverbial "cook in the kitchen" arborist - the arborist across from me who is blending different portions of different formulas to create a new and yet to be

heard of formula to arrive at an opinion. This approach to problem solving never works and is embarrassing and expensive to the arborist's client. This is problematic for almost all concerned and can, if not usually is the corner stone for failure.

When beginning to formulate an opinion remember to consider Daubert. The people across from you will and so might the judge. ❖

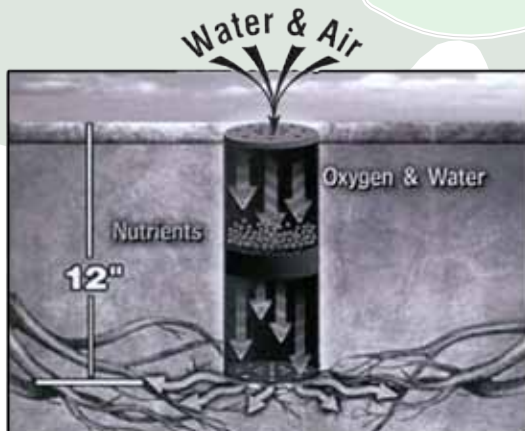
WANE 3000[®] TREE SYSTEM

...Since 1972

- County Library Parking Lots
- Fire House Parking Lots
- City Side Walks
- Major Florida Amusement Parks



**Renovated 5 Points Park in Downtown Sarasota.
24 Live Oak Trees supported by 224 Wane Units**



WANE 3000[®] TREE SYSTEM

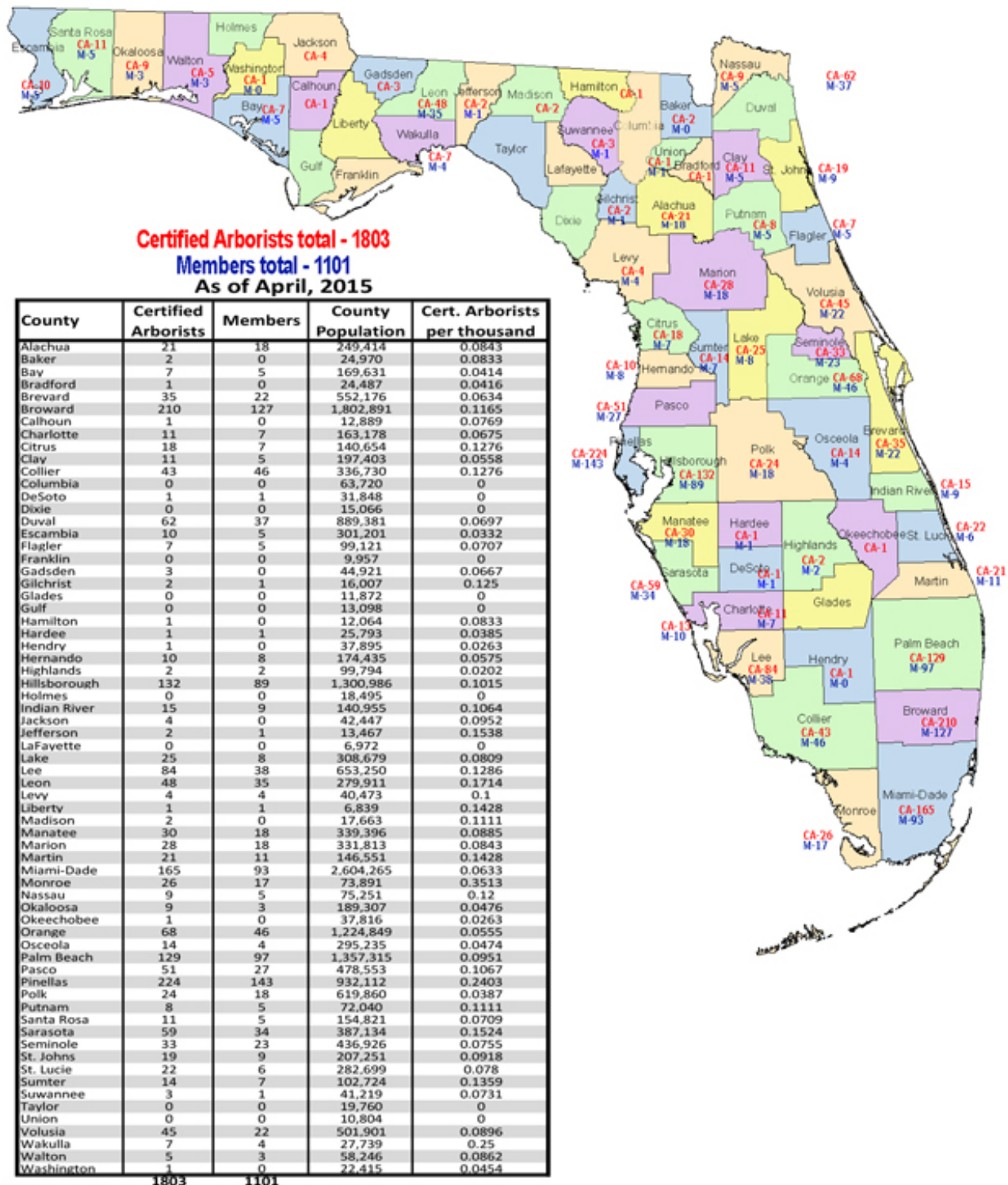
www.wane3000.com

(813) 961-1060

casmith@tampabay.rr.com

Fellow Certified Arborists: Where They Reside

Florida counties vary a great deal in population. Does the number of certified arborists follow the same population trend? Check out the Certified Arborist map to see where arborists and members reside throughout Florida.



Now offering:

Trunk Injection Products for

Spiraling Whitefly Control

Lowest Cost Trunk Injectable Imidacloprid
Highest Active Ingredient (10%)
Lowest Cost Equipment

Easy
Quick
Effective

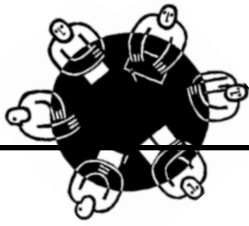
- Approximately one minute application time in palms.
- Starts killing Whitefly in less than 24 hours.
- Simple, proven and low cost application equipment.
- Completely closed system-never touch the insecticide.
- Doesn't kill beneficial insects, only kills insects feeding on the tree.

Texas Phoenix Palm Decline and Lethal Yellowing Control Products Available Too



(561) 655-6940
palmtreesaver.com
store.palmtreesaver.com
info@palmtreesaver.com

Distributors for:  Mauget.



Florida Chapter Board Updates

BOARD SHORTS:

No Trees Florida Conference Cruise on the Horizon for 2016



After researching and presenting different options for hosting a cruise conference for the 2016 Trees Florida Conference, chair Diana Gilman presented her findings to the board. The board voted against hosting the next Trees Florida Conference (2016) aboard a cruise ship and will continue planning the event at a typical conference center in South Florida. The board may revisit the idea of a future conference aboard a cruise ship during a different year.

New Florida Chapter Research and Education Grants Program to be Developed



The board approved the creation of a Florida Chapter Grants Program to support research and education within the state of Florida. Dr. Ed Gilman was appointed as the Chair; he and his committee will develop a program and return to the board with his proposal for board approval at the June board meeting.



February Planning Session Brings Focus to Several Initiatives



The special Chapter planning session held in February at Nehrling Gardens in Gotha, FL. The meeting was attended by many board members, committee members and staff to discuss not only personality similarities and differences, but to also focus on a list of goals for the Florida Chapter for the near future. The attendees focused on three main goals:

- Increasing the Chapter's presence on social media
- Finding different ways to provide a variety of services for all of our members
- Educating the next generation of arborists

The board will continue discussion and implementation of these initiatives over the coming year.

JOB OPPORTUNITY
CRAWFORD LANDSCAPING

Position available: Arbor Division Supervisor


- Manage approximately \$1 million in trimming and removal work
- Supervisor position reports directly to the Arbor Division Manager
- Responsible for 13 to 18 employees and all equipment
- Communication skills and the ability to manage and motivate essential
- Candidate should be an ISA Certified Arborist
- Ability to speak Spanish a plus

Annual Salary of \$65-\$75,000 depending on qualifications

CRAWFORD LANDSCAPING is one of the largest full service maintenance companies in Southwest Florida with contracts from Marco Island to Fort Myers.

* Equal Opportunity Employer
* Drug Free Work Place

Send questions or resumes to
pbuck@discovercrawford.com
or call Crawford Landscaping at
(888)581-5151



CRAWFORD
LANDSCAPING

2015 Certification Exam Schedule

The FLORIDA CHAPTER of ISA is pleased to announce our 2015 schedule of Certification exams. See the chart below for the site nearest you.

Date	Exam/Class	Location	Time	Proctor or Instructors	Last Date to Register	Cost Member/Nonmem
Aug. 8, 2015	Certified Arborist Exam	Gaylord Palms 6000W Osceola Kissimme FL Tampa Room	8:00 am to 12:00 am	Brian Gould & Norm Easey	Minimum 12 business days prior	\$150/ \$250

This schedule is subject to change as additional tests and review sessions may be added. Visit www.floridaisa.org for updates.

For an application form to register for an Exam call the ISA Office in Champaign, IL at 888-472-8733. To purchase an ISA Certification Study Guide, call the Florida Chapter ISA at 941-342-0153 or fax an order form to 941-342-0463.

The ISA Illinois must receive your application & exam fees A MINIMUM OF TWELVE BUSINESS DAYS prior to the exam date. NO EXCEPTIONS! (ISA Illinois is closed New Year’s Day, Good Friday, Memorial Day, Independence Day, Labor Day, Thanksgiving Day and the day after, and Christmas Day). First-time applicants can apply online at www.isa-arbor.com.

PREPAYMENT IS REQUIRED VISA/MC/AMEX accepted. US FUNDS ONLY

The Florida Chapter ISA in now a Member of the Florida Green Industry Colition.

Learn more about it here.

Florida Chapter ISA - 2014 Education Schedule

*The schedule below is tentative and subject to changes.

Date	Seminar/Class	Location (s)	Open for Registration
June 9, 2015	Coast Series Seminars	Tampa	Register Online
June 12, 2015	Coast Series Seminars	Miami	Register Online
July 17, 2015	Arborist Safety Workshop	Tampa	
August 8-12, 2015	ISA International Conference, Orlando Gaylord Palms	Tallahassee	Register Online

Welcome!

New Florida Chapter Members

Here are the individuals that joined the Florida Chapter during the first quarter of 2015. If you see a name from your area of the state, look up their phone number online* and give them a call. Introduce yourself and find out what aspect of arboriculture the new member is involved in. Let's make the Florida Chapter friendlier. We're all working in different ways for the same goals. Get to know other Chapter members. You might make some helpful connections for the future.

Dave Paduda, Delray Beach, FL
 Alexandra Scarborough, Palm Coast, FL
 Simon M Stratford, Titusville, FL
 Joshua Collazo, Miramar, FL
 Adam Mengel, Palatka, FL
 Russell James Horton, Jacksonville, FL
 Corey Michael Phillips, Englewood, FL
 Brian Tunge, Mount Pleasant, MI
 Matthew DiSparano, Plantation, FL
 Bladimir Cardenas, Jr., Homestead, FL
 Tanny J. Retz, Miami Gardens, FL
 Justin Plemmons, Gainesville, FL
 Davis Dewitt, Windermere, FL
 Gustavo Asp, Jupiter, FL
 Victor Paul Sawyer, Loxahatchee, FL
 Curt Henschel, Clermont, FL
 Caroline Hament, Indialantic, FL
 Jamey Liddell, Kamas, UT
 Jose Garcia, Cabo Rojo, PR
 Margaret E. Garner, Princeton, FL
 Douglas Joseph Ryder, Oldsmar, FL
 Daniel Edward Leckie, Bartow, FL
 Mike Harris, Fruitland Park, FL
 Ronnie Hughes, Orlando, FL
 Tom Stevens, Astatula, FL
 Seth Nalven, Ossining, NY
 Michael Pascual, Palm Beach Gardens, FL
 Darren Altorro Davis, Bunnell, FL

Thaddeus Bielecki, Weston, FL
 Jason Hyde, Gainesville, FL
 James AnthonyWilliam Dumas, Margate, FL
 Gary Drexel Nicholson, Jr., Cooper City, FL
 Chris David Wilson, Milton, FL
 James M. Moody, Jacksonville, FL
 David Gewurtz, North Miami Beach, FL
 William Jaskela, Palm City, FL
 Juan Cornejo, Highland City, FL
 Todd R. Walton, Miami, FL
 Igna R. Portilla, Miami, FL
 Dewey Kelly Payne, Sebring, FL
 Richard M. Foote, Kent, OH
 David Raymond Wolfson, Kissimmee, FL
 Kasandra Moore, Tampa, FL
 Caleb Hoskins, Palm Harbor, FL
 William John Poertner, Hobe Sound, FL
 Travis Simmons, West Palm Beach, FL
 Ramiro Ramos Solorzano, Winter Park, FL
 Amanda Young, Fernandina Beach, FL
 Mark Richard Battalio, Largo, FL
 Donald J. Quier, Oakland Park, FL
 Diego Rico, Delray Beach, FL
 Eric Sweeney, Milton, FL
 Jorge Flores, Naples, FL
 Justin Arthur Hancock, Sumterville, FL
 Dan Utic, Thonotosassa, FL

**Go to <http://www.isa-arbor.com>, then go to "Members Only" and log in. Then go to ISA membership directory. If you do not know your log in for members only, contact ISA headquarters at (888) 472-8733. Once you log in, you can update your address, check your CEU's, edit or verify Certified Arborist information and search the membership list.*

Letters to the Editor

We welcome your thoughts about Florida Arborist articles, about your Florida Chapter, or about tree issues in general.

Email your letters to:
 floridaisa@comcast.net

or mail to:
 Florida Chapter - ISA
 7853 S. Leewynn Court
 Sarasota, FL 34240



Please remember:
 Letters should be no longer than 300 words.
 We reserve the right to condense letters, or to edit as necessary.

An invitation to all members
 to attend a

Board of Directors Meeting!

Call 941-342-0153

for specific times and locations

Up-coming 2015 Board Meeting - Dates & Locations

June 19, 2015 - Orlando

Arborist Certification Committee Report

By Norm Easey, Florida Certification Liaison

There is currently one ISA certification exam scheduled in Florida within the next six months.. [Click here for the specific dates](#). The ISA Certified Arborist exam is also now available at Pearson Testing Centers throughout Florida. See the ISA International web site www.isa-arbor.com for more information about the various ISA arborist credentials and how to earn them.

Florida Chapter currently has 1854 Certified Arborists.

The Florida Chapter would like to congratulate the following 23 individuals for earning their Arborist Certification Municipal Arborist Certification and Tree Worker Specialist Certification during the first quarter of 2015:

Certified Arborist

Jeffrey Alan Busch, Tampa, FL
 Kenneth Todd Carlton, Crawfordville, FL
 Christopher Comer, Fort Myers, FL
 Robert Craig Conner, Panama City Beach, FL
 Travis Eugene Crosson, Avon Park, FL
 Michael Sheldon Graham, Eustis, FL
 Russell James Horton, Jacksonville, FL
 Craig Randall Huston, Santa Rosa Beach, FL
 Jonathan Francis Korman, Amelia Island, FL
 Eric Jackson Lanehart, Jacksonville, FL
 Gustavo Fortunato Leon, Naples, FL
 Gregory Marciszewski, Fort Lauderdale, FL
 Derek Gaben Nelms, Gulf Breeze, FL
 Gary Drexel Nicholson, Jr., Cooper City, FL
 Dewey Kelly Payne, Sebring, FL
 Steven R. Pietrzyk, Fort Myers, FL
 Nathan Calder Pugh, Tallahassee, FL
 Robert Earl Riefer, Lehigh Acres, FL
 Wayne Evan Rollings, Jr., Wesley Chapel, FL
 John Carl Floyd White, Altha, FL
 Wayne L. Williams, Pensacola, FL
 David Raymond Wolfson, Kissimmee, FL

Tree Worker Specialist

Robert E. Hubbard, Kissimmee, FL



Are you thinking about becoming certified?

[Visit the International ISA website](#)

to access the certification application handbook with further information.

International Society of Arboriculture Florida Chapter

Our Mission: "To Promote and Improve the
Scientifically Based Practice of Professional Arboriculture"



Arborist Code of Ethics

Strive for continuous self-development by increasing their qualifications and technical proficiency by staying abreast of technological and scientific developments affecting the profession.

Not misuse or omit material facts in promoting technical information, products or services if the effect would be to mislead or misrepresent.

Hold paramount the safety and health of all people, and endeavor to protect property and the environment in the performances of professional responsibilities.

Accurately and fairly represent their capabilities, qualifications and experience and those of their employees and/or agents.

Subscribe to fair and honest business practices in dealing with clients, suppliers, employees and other professionals.

Support the improvement of professional services and products through encouraging research and development.

Observe the standards and promote adherence to the ethics embodied in this code.



Florida Arborist
Florida Chapter ISA
7853 South Leewynn Court
Sarasota, FL 34240